



SEWAGE  
TREATMENT  
&  
LIFTING

WASTEWATER  
HANDLING

AERATION  
&  
MIXING  
SYSTEMS

WASTEWATER  
COLLECTION  
&  
PUMPING



water solutions

# REFERENCE BOOK

zenit.com



# ZENIT GROUP

Zenit's history began more than 60 years ago. Today, it has grown into a company with strong international presence, supported by hundreds of loyal employees, partners and associates all over the world.

Our core business is the design, manufacture and distribution of electric submersible pumps for residential and industrial use.

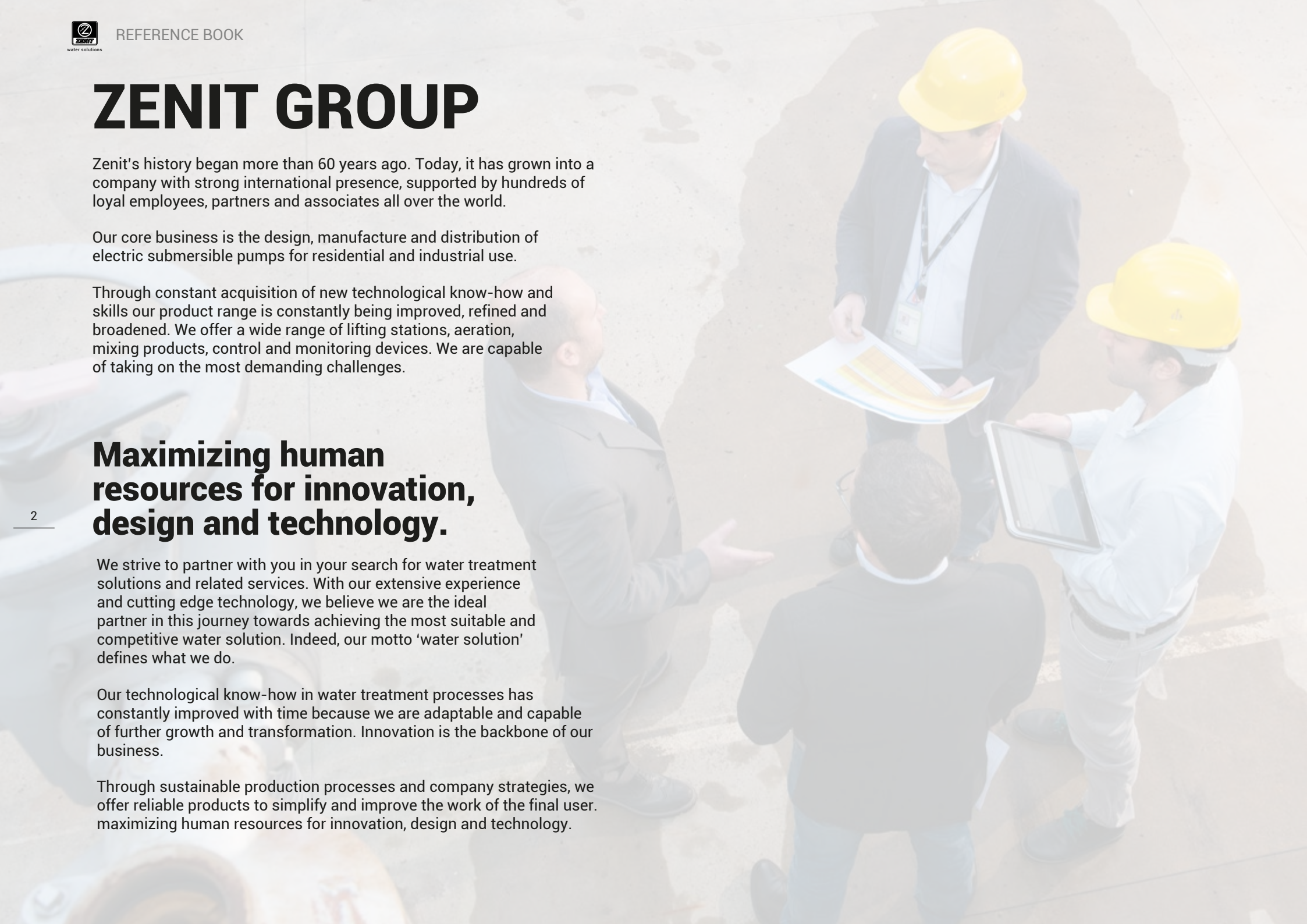
Through constant acquisition of new technological know-how and skills our product range is constantly being improved, refined and broadened. We offer a wide range of lifting stations, aeration, mixing products, control and monitoring devices. We are capable of taking on the most demanding challenges.

## Maximizing human resources for innovation, design and technology.

We strive to partner with you in your search for water treatment solutions and related services. With our extensive experience and cutting edge technology, we believe we are the ideal partner in this journey towards achieving the most suitable and competitive water solution. Indeed, our motto 'water solution' defines what we do.

Our technological know-how in water treatment processes has constantly improved with time because we are adaptable and capable of further growth and transformation. Innovation is the backbone of our business.

Through sustainable production processes and company strategies, we offer reliable products to simplify and improve the work of the final user. Maximizing human resources for innovation, design and technology.



|     |                      |
|-----|----------------------|
| 4   | ITALY                |
| 39  | EUROPE               |
| 106 | AFRICA & MIDDLE EAST |
| 127 | ASIA & OCEANIA       |
| 158 | NORTH/SOUTH AMERICA  |







ITALY

EST. 1971  
100% OF REVENUE FROM  
SALES OF PETROLEUM PRODUCTS

PIPELINE FROM LOADING PUMPS  
RECTIFIER FLOOR INCL. PUMPS  
VAPOR LINE  
TANK TO STORAGE



# A2A SPA - BRESCIA

ENERGY, WATER AND GAS MANAGEMENT



## COUNTRY

Verziano

## PLANT/USE

Oxydation tank within WWTP

## PRODUCTS

Tubular diffusers OXYTUBE 2-750 - Nr. 880



OXYTUBE







# GRECI SPA - PARMA

FRUIT AND VEGETABLES PROCESSING



**COUNTRY**

Parma

**PLANT/USE**

Lifting station

**PRODUCTS**

SMP 1000/4/150 - Nr.6



SMP







# HERA SPA - BOLOGNA

ENERGY, WATER AND GAS MANAGEMENT



**COUNTRY**

Modena

**PLANT/USE**

WWTP

**PRODUCTS**

DGN 150/6/80 - Nr. 3

SBN 5000/4/200 - Nr. 4

MAN 400/4/100 - Nr. 8

Mixer PRO 750/4/4/600 - Nr. 3



DGN



SBN



MAN



MIXERS



UNIQA





# ACEA PINEROLESE INDUSTRIALE SPA

ENERGY, WATER AND GAS MANAGEMENT



## COUNTRY

Pinerolo

## PLANT/USE

First flush diverters

## PRODUCTS

DGP 1500/4/125 - Nr.4



DGP





# PIZZOLI SPA - BOLOGNA

FOOD PROCESSING

**COUNTRY**

Budrio

**PLANT/USE**

Oxydation tank whitin WWTP

**PRODUCTS**

OXYTUBE 2-750 - Nr. 64

OXYPLATE 9" EPDM LP - Nr. 500

PRO 400/6/06/850



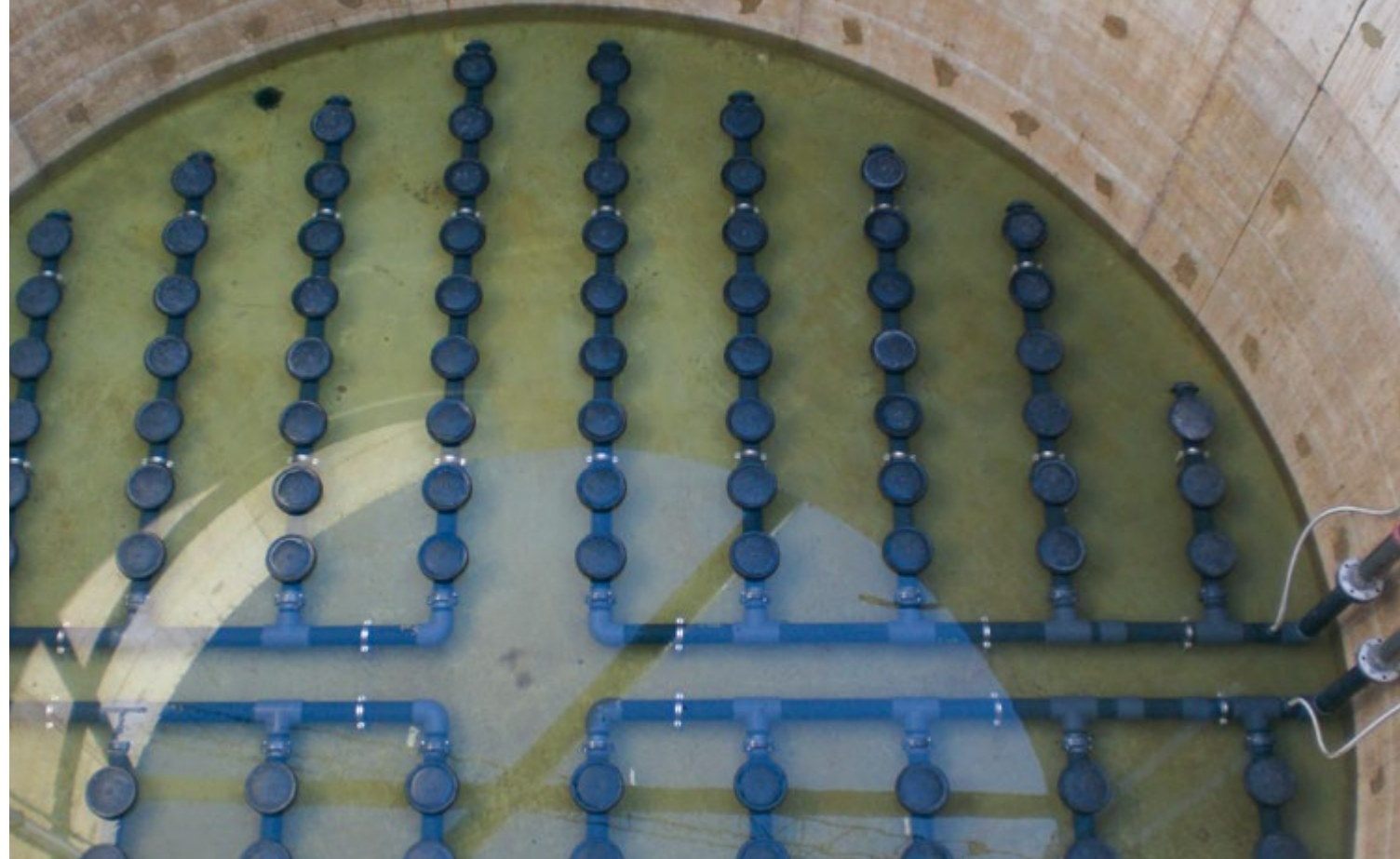
OXYTUBE



OXYPLATE 9" - 12"



MIXERS







# TECNO IDRO SRL - BRESCIA

WATER TREATMENT PLANTS DESIGN AND CONSTRUCTION



## COUNTRY

Brescia

## PLANT/USE

Primary water lifting station

## PRODUCTS

DRP 1000/4/150 - Nr.3



DRP





# CONSORZIO TREVI SPA

HIGH SPEEDS TRAIN STATION



## COUNTRY

Bologna

## PLANT/USE

High speed train station - groundwater lifting station

## PRODUCTS

SBN 5000/4/150 - Nr. 2

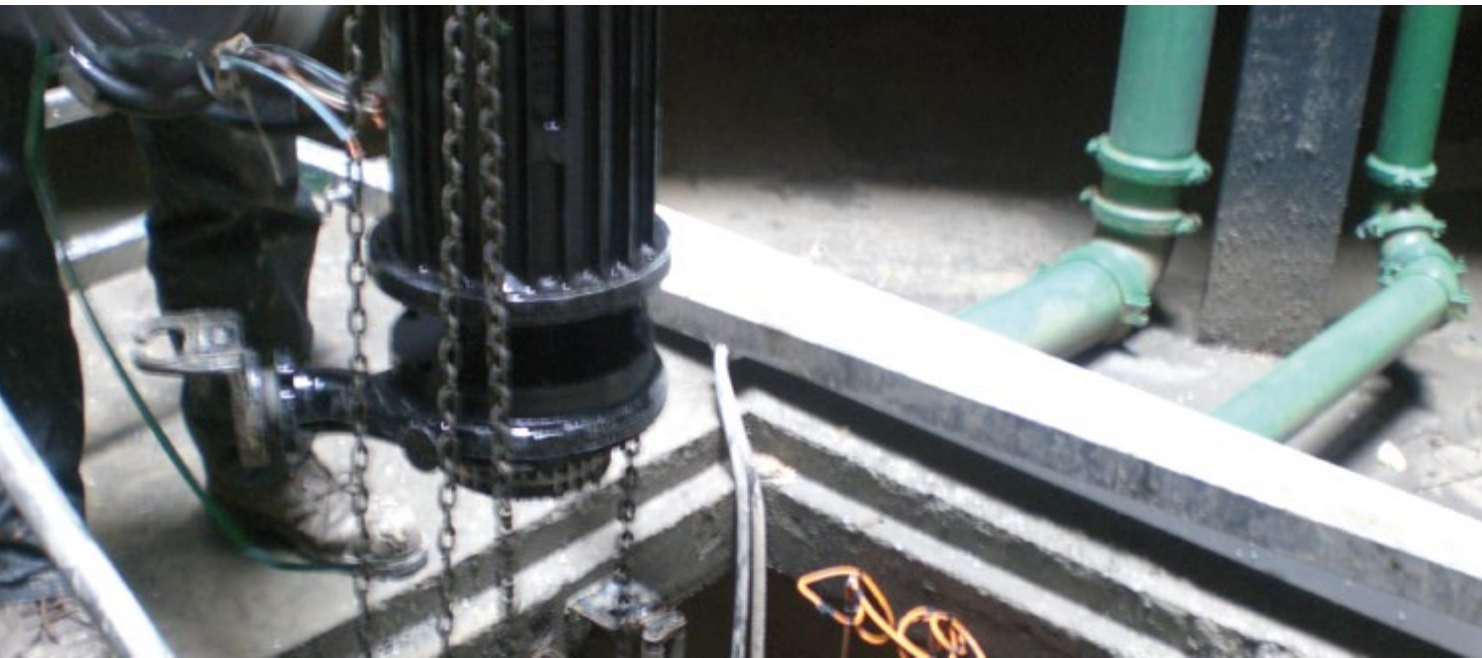
APP 1000/2/G50H - Nr. 3



SBN



APP





# B.I.M. - BERGAMO

COMO LAKE CONSORTIUM



## COUNTRY

Pittanzelle

## PLANT/USE

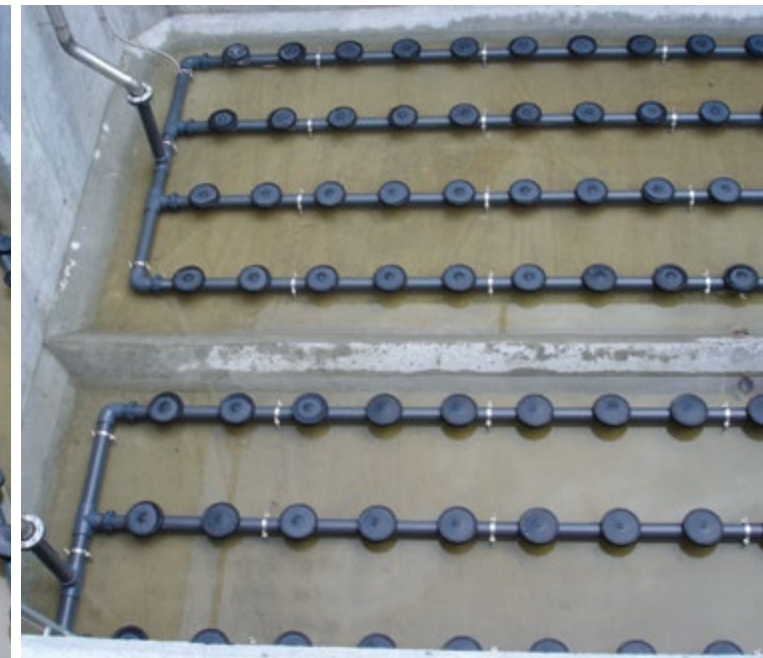
Oxydation tank whitin WWTP

## PRODUCTS

Disc diffusers OXYPLATE 9" - Nr.152



OXYPLATE 9"-12"





# ATAC CIVITANOVA SPA

ENERGY, WATER AND GAS MANAGEMENT



## COUNTRY

Civitanova Marche

## PLANT/USE

Oxydation tank

## PRODUCTS

Removable ramps with tube diffusers mod.

OXYTUBE 2-750 EPDM LP - Nr. 156

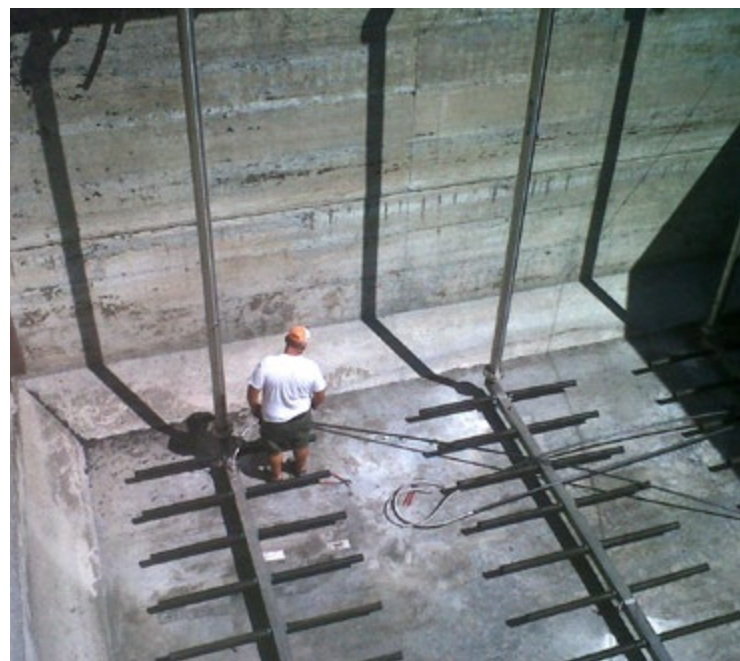
MIXER PRO 300/4/6/550



OXYTUBE



MIXERS





# MERCK SERONO SPA

PHARMA INDUSTRY



## COUNTRY

Rome

## PLANT/USE

Oxydation tank

## PRODUCTS

Aeration system with tube diffusers mod.OXYTUBE  
2-750 EPDM LP - Nr. 60



OXYTUBE





# MARCHE MULTISERVIZI SPA

INTEGRATED WATER CYCLE MANAGEMENT



## COUNTRY

Urbania  
Cagli  
Villa Ceccolini

## PLANT/USE

WWTP

## PRODUCTS

Tube diffusers OXYTUBE 2-750 EPDM LP - Nr. 192  
Tube diffusers OXYTUBE 2-500 EPDM LP - Nr. 80



OXYTUBE





# ACQUE NORD SPA - NOVARA

INTEGRATED WATER CYCLE MANAGEMENT

**COUNTRY**

Mergozzo

**PLANT/USE**

WWTP

**PRODUCTS**Aeration system with  
OXYPLATE 9" - 12"

OXYPLATE 9" - 12"



# ACQUE NORD SPA - NOVARA

INTEGRATED WATER CYCLE MANAGEMENT

**COUNTRY**

Verbania

**PLANT/USE**

Water treatment

**PRODUCTS**

Uniqa OC 150D 7.5/4 AW 222

Uniqa OC 150D 5.5/4 AW 220

Uniqa V 100B 7.5/4 AW 235



UNIQA





# IRIS ACQUA - GORIZIA

WATER TREATMENT PLANTS DESIGN AND CONSTRUCTION



**COUNTRY**  
Gorizia

**PLANT/USE**  
Lifting plant Grado municipality

**PRODUCTS**  
Uniga OC 100E 7.5/4 AW



UNIGA



# ASET SPA - FANO

INTEGRATED WATER CYCLE MANAGEMENT



**COUNTRY**  
Fano

**PLANT/USE**  
Water treatment

**PRODUCTS**  
Uniga V 100B 5.5/4 AW 210



UNIGA



# LATTEGRA SPA - PIACENZA

DAIRY INDUSTRY

**COUNTRY**

Gragnano Trebbianese

**PLANT/USE**

WWTP

**PRODUCTS**

Disc diffuser OXYPLATE 12" - Nr. 132



OXYPLATE 9"-12"





# CREMONINI SPA - MILANO

CHP SYSTEMS DESIGN AND IMPLEMENTATION



## COUNTRY

Ospedaletto Lodigiani

## PLANT/USE

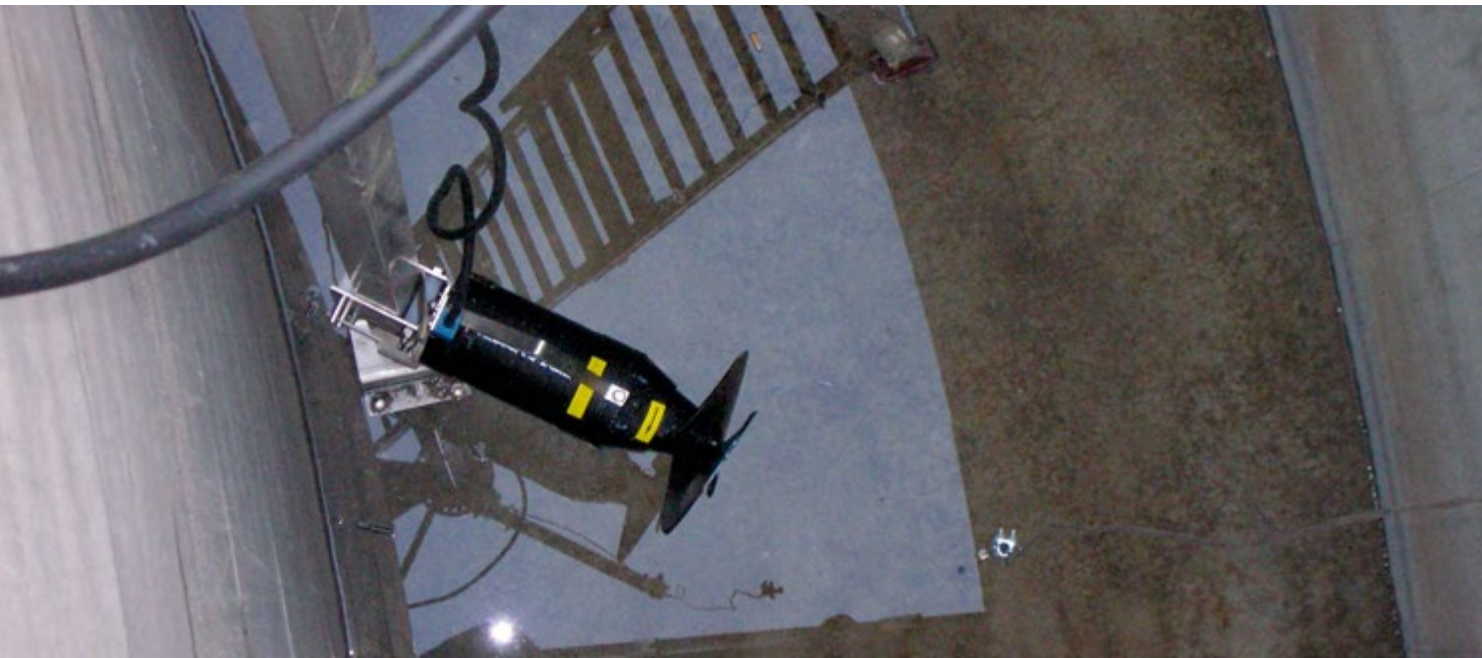
WWTP and equalization tank

## PRODUCTS

Mixer PRS 200/6/1/285 - Nr. 2



MIXERS







# OLIMPIAS SPA - TREVISO

TEXTILE INDUSTRY



**COUNTRY**

Verona

**PLANT/USE**

WWTP

**PRODUCTS**

SBN 5000/4/200 - Nr. 2



SBN





# IDROTECNICA SRL - VIBO VALENTIA

CHP SYSTEMS DESIGN AND IMPLEMENTATION



## COUNTRY

Guardavalle Marina

## PLANT/USE

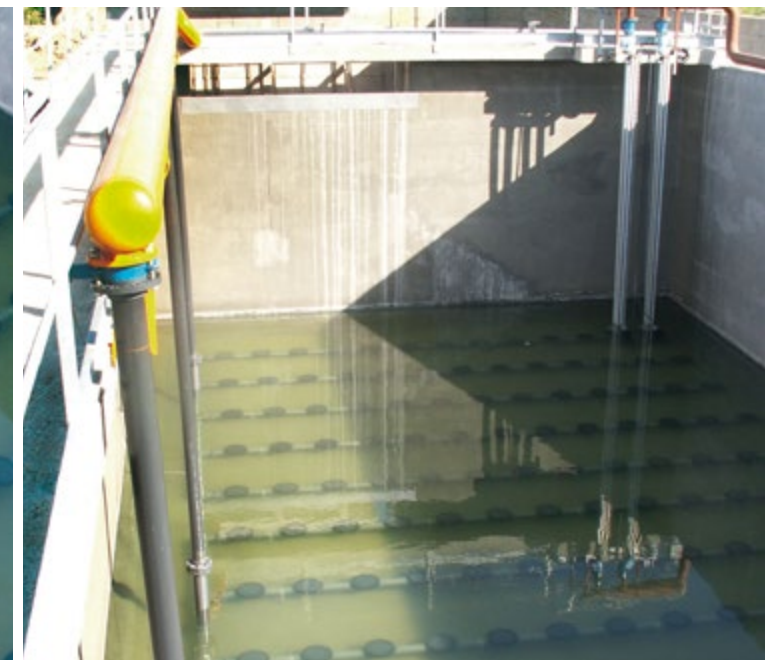
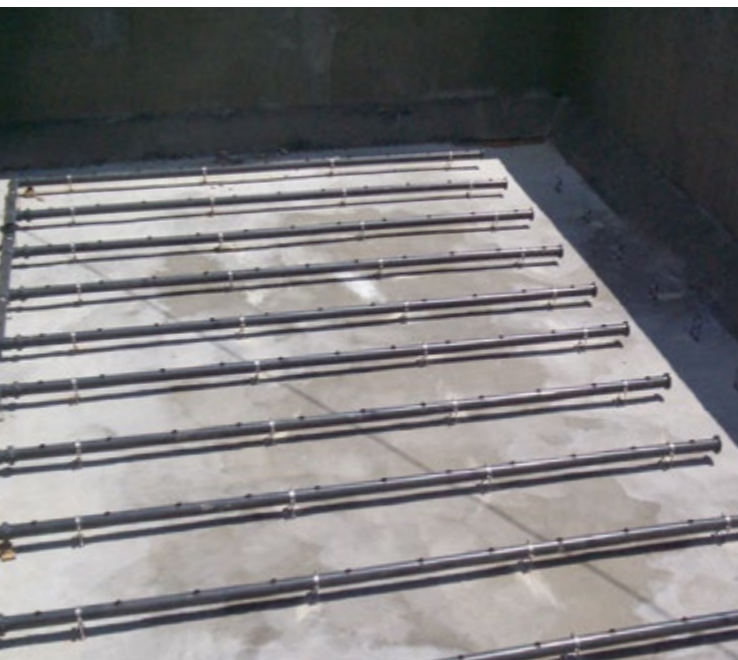
WWTP and nitrification tank

## PRODUCTS

Aeration system with  
OXYPLATE 9" EPDM LP - Nr. 210



OXYPLATE 9"-12"





# MARCHE MULTISERVIZI SPA

INTEGRATED WATER CYCLE MANAGEMENT



## COUNTRY

Acqualagna

## PLANT/USE

WWTP and nitrification tank

## PRODUCTS

OXYPLATE 12" EPDM LP - Nr. 288



OXYPLATE 9"-12"





# ACQUE NORD SPA - NOVARA

INTEGRATED WATER CYCLE MANAGEMENT

**COUNTRY**

Villadossola (VB)

**PLANT/USE**

Oxydation tank

**PRODUCTS**

OXYPLATE 9" EPDM LP - Nr. 196



OXYPLATE 9"-12"





# CPL CONCORDIA - SOC. COOP.

PLANTS DESIGN AND CONSTRUCTION



## COUNTRY

Concordia sul Secchia

## PLANT/USE

Process/machining wastewater lifting

## PRODUCTS

DRF 75/2/G40V-EX - Nr. 30



DRF







# CONSERVE ITALIA SPA- BOLOGNA

FOOD GROUP



**COUNTRY**

Pomposa

**PLANT/USE**

Lifting station

**PRODUCTS**

SBN 3000/4/200 - Nr. 1



SBN



# RATHEON SRL



**COUNTRY**

Anagni

**PLANT/USE**

WWTP, pharmaceutical industry

**PRODUCTS**

DRY 300/4/100 - Nr. 4

DGX 150/4/80 - Nr. 6

MIXER PRO 300/4/06/550 - Nr. 4



DRY



DGX



MIXERS



# ATAC CIVITANOVA SPA

ENERGY, WATER AND GAS MANAGEMENT



## COUNTRY

Civitanova Marche

## PLANT/USE

Primary water lifting station

## PRODUCTS

Uniqua OC 250B 45/6 AW 435



UNIQUA





# LADURNER IMPIANTI SRL - BOLZANO

PLANTS DESIGN AND CONSTRUCTION



**COUNTRY**

Rieti

**PLANT/USE**

WWTP

**PRODUCTS**

DRN 150/6/80 - Nr. 7

DRN 300/4/80 - Nr. 2

DRP 550/6/150 - Nr. 2



DRN



DRP



DRN



DGN



DGP



MIXERS

# LADURNER IMPIANTI SRL - BOLZANO

PLANTS DESIGN AND CONSTRUCTION



**COUNTRY**

Roma

**PLANT/USE**

WWTP from marble quarries

**PRODUCTS**

DGP 550/4/80 - Nr. 4

DGN 200/4/100 - Nr. 4

DRN 250/6/150 - Nr. 4

DGN 200/4/80 - Nr. 2

DGP 750/4/100 - Nr. 2

DGN 300/4/100 - Nr. 2

MIXER PRS 200/6/01/285 - Nr. 14



# HENRAUX SPA - LUCCA

MARBLE MINING AND PROCESSING



## COUNTRY

Lucca

## PLANT/USE

WWTP from marble processing

## PRODUCTS

Uniqua V 100B 15/4 AW 266



UNIQA





# ACCIAIERIE DI SICILIA SPA - CATANIA

METAL SCRAP RECOVERY AND PROCESSING



## COUNTRY

Catania

## PLANT/USE

WWTP lamination and debris washing

## PRODUCTS

Uniqa V080B 7,5/2 AW 155



UNIQA





# PIETRA SERENA - CASONE GROUP

STONE QUARRYING AND PROCESSING



## COUNTRY

Castiglione dei Pepoli

## PLANT/USE

WWTP from marble processing

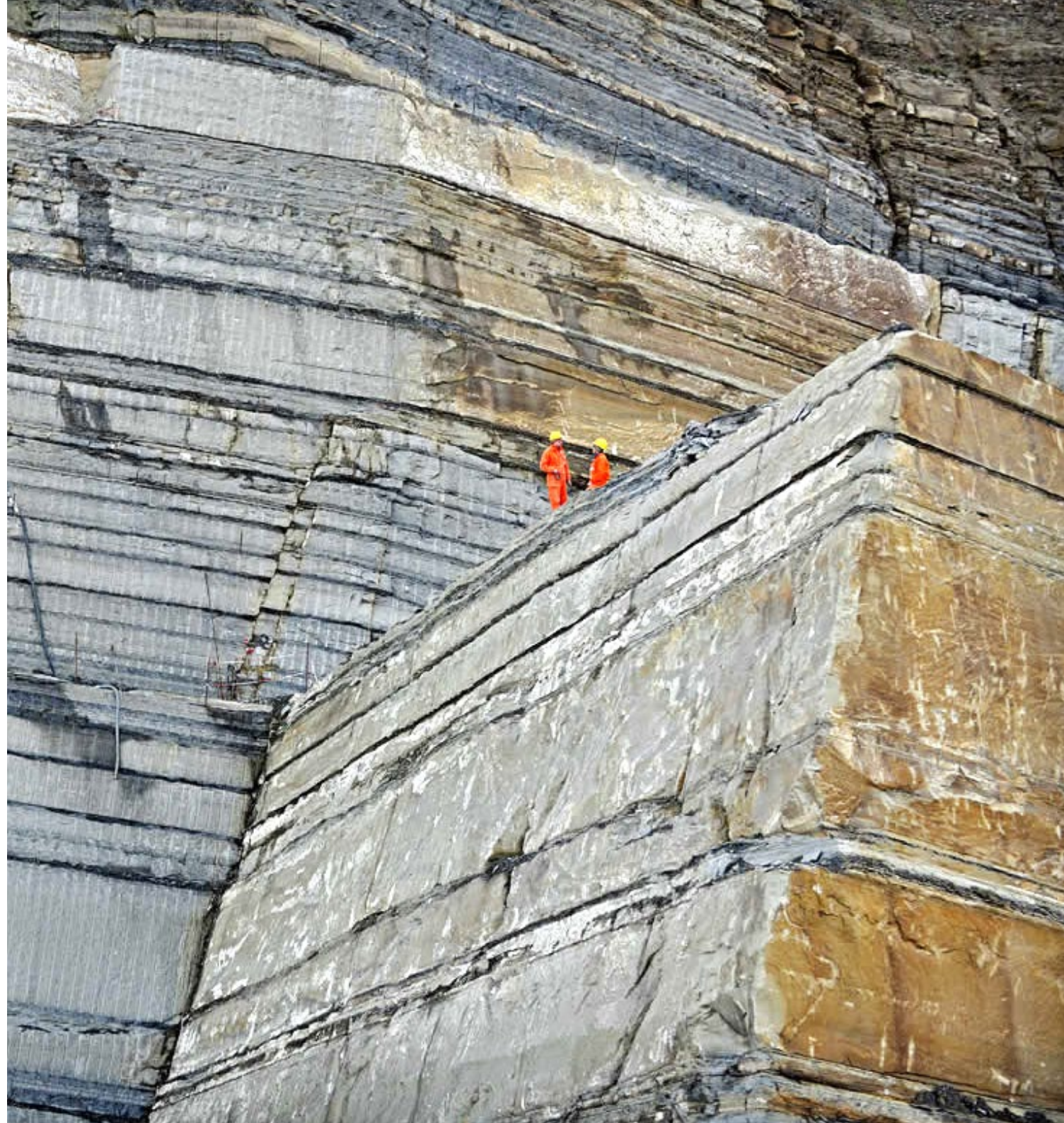
## PRODUCTS

Uniqua OC 150 F 18.5/4 AW 275 - Nr.1

SMP 2000/4/150 - Nr.1



UNIQA





# CIIP SPA - ASCOLI PICENO

INTEGRATED WATER CYCLE MANAGEMENT



**COUNTRY**

Ascoli Piceno

**PLANT/USE**

Lifting plant

**PRODUCTS**

Uniqua V 100B 5.5/4 AW 210



UNIQA



# TENNACOLA - FERMO

INTEGRATED WATER CYCLE MANAGEMENT



**COUNTRY**

Sant'Elpidio a Mare

**PLANT/USE**

Lifting plant

**PRODUCTS**

Uniqua OC 150D 4/4 AW 210

Uniqua OC 150D 5.5/4 AW 220



UNIQA



# IES BIOGAS

BIOGAS PLANTS DESIGN AND INSTALLATION



**COUNTRY**

Cremona

**PLANT/USE**

Cogeneration plant, Process/machining wastewater lifting

**PRODUCTS**

MAN 550/2/100 - Nr. 4



MAN





# SERVIZI AMBIENTALI SPA - SAVONA

SEWERS, PUMPING SYSTEMS MANAGEMENT, COLLECTION AND GRILLING



## COUNTRY

Borghetto Santo Spirito

## PLANT/USE

WWLP

## PRODUCTS

Uniqa OC200C 160/4 AD





# ACQUALATINA S.P.A. - LATINA

**COUNTRY**

Formia

**PLANT/USE**

WWLP

**PRODUCTS**

Uniqua OC 200C 75/6 AW 490





## ACQUA NOVARA VCO SPA



## COUNTRY

Vogogna (VB)

## PLANT/USE

WWLP

## PRODUCTS

Uniqa V 100B 5,5/4 AW 220 PA - Nr. 3



UNIQA





# ACQUA NOVARA VCO SPA



**COUNTRY**  
Calami (VB)

**PLANT/USE**  
WWLP

**PRODUCTS**  
Uniqua V 100B 5,5/4 AW 220 PA - Nr. 3



UNIQA





# MUNICIPALITY

**COUNTRY**

Brandizzo (TO)

**PLANT/USE**

Rain water lifting station

**PRODUCTS**

Uniqa OC 150A 11/4 AW 245 PF - Nr. 2  
Uniqa OC 150A 11/4 AW 245 PA - Nr. 1  
Uniqa OC 150F 15/4 AW 269 PF - Nr. 2  
Uniqa OC 150F 15/4 AW 269 PA - Nr. 1  
Uniqa OC 150D 7,5/4 AW 230 PF - Nr. 2  
Uniqa OC 150D 7,5/4 AW 230 PA - Nr. 1  
DGF 200/2/G50H A1CT/50 - Nr. 2







# SACLÀ SPA - ASTI

FOOD PROCESSING



COUNTRY

Asti

PLANT/USE

Process water lifting plant

PRODUCTS

DGN 300/4/100 CCE - Nr. 4



DGN





A large industrial refinery at night, illuminated by blue and orange lights, with the word 'EUROPE' overlaid in a white circle.

EUROPE



# FISH FARMS

**COUNTRY**

Latvia

**PLANT/USE**

WWTP

**PRODUCTS**

SBP

DRP

DGO



# LOGISTIC CENTER

**COUNTRY**

Sv. Nedjelja (Croatia)

**PLANT/USE**

Lifting station

**PRODUCTS**

GRN 300/2/G50H - Nr. 2





# MERCATOR

**COUNTRY**

Rovinj (Croatia)

**PLANT/USE**

WWTP

**PRODUCTS**

DRN 300/4/100 - Nr. 3



DRN



# MLINAR

**COUNTRY**

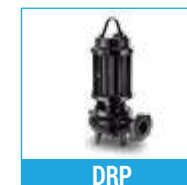
Zagreb (Croatia)

**PLANT/USE**

WWTP

**PRODUCTS**

DRP 1000/4/100 - Nr.2



DRP



# SUNCANA

**COUNTRY**

Turopolje (Croatia)

**PLANT/USE**

WWTP

**PRODUCTS**

SBP 1000/4/150 - Nr. 3



SBP



# UNIKOMERC

**COUNTRY**

Velika Gorica (Croatia)

**PLANT/USE**

WWTP

**PRODUCTS**

DGN 200/4/80 - Nr. 4



DGN



# MUSIKKITALO

**COUNTRY**

Helsinki (Finland)

**PLANT/USE**

WWTP and lifting station

**PRODUCTS**

DG Bluepro 75 - Nr. 1

DGO 100/2/50 - Nr. 2

SMP 1000/2/80 - Nr. 4

SMP 750/2/80 - Nr. 2

APN 300/2/50 - Nr 6





# SUNBORN HOTELS



**COUNTRY**

Finland

**PLANT/USE**

Naantali SPA - Sunborn Hotels/Lifting station

**PRODUCTS**

DGO 200/2/80 - Nr. 5



DGO







# STOCKMANN



## COUNTRY

Helsinki (Finland)

## PLANT/USE

WWTP

## PRODUCTS

- DRO 150/2/50 - Nr. 1
- DGO 100/2/50 - Nr. 2
- DRP 2000/2/80 - Nr. 4
- APN 750/2/50 - Nr. 4
- APN 300/2/50 - Nr. 1
- APN 550/2/50 - Nr. 2
- SMP 1000/2/80 - Nr. 1





# KAMPIN KESKUS

**COUNTRY**

Helsinki (Finland)

**PLANT/USE**

WWTP

**PRODUCTS**

DRO 100/2/50 - Nr. 1  
MAN 400/2/80 - Nr. 4  
SMP 2000/4/150 - Nr. 2  
DRP 1500/4/100 - Nr. 2  
DRO 150/2/50 - Nr. 3  
DGO 100/2/50 - Nr. 5  
DRN 400/2/80 - Nr. 4  
DGO 200/2/80 - Nr. 6





# MUNICIPALITY OF LILLEHAMMER

**COUNTRY**

Norway

**PLANT/USE**

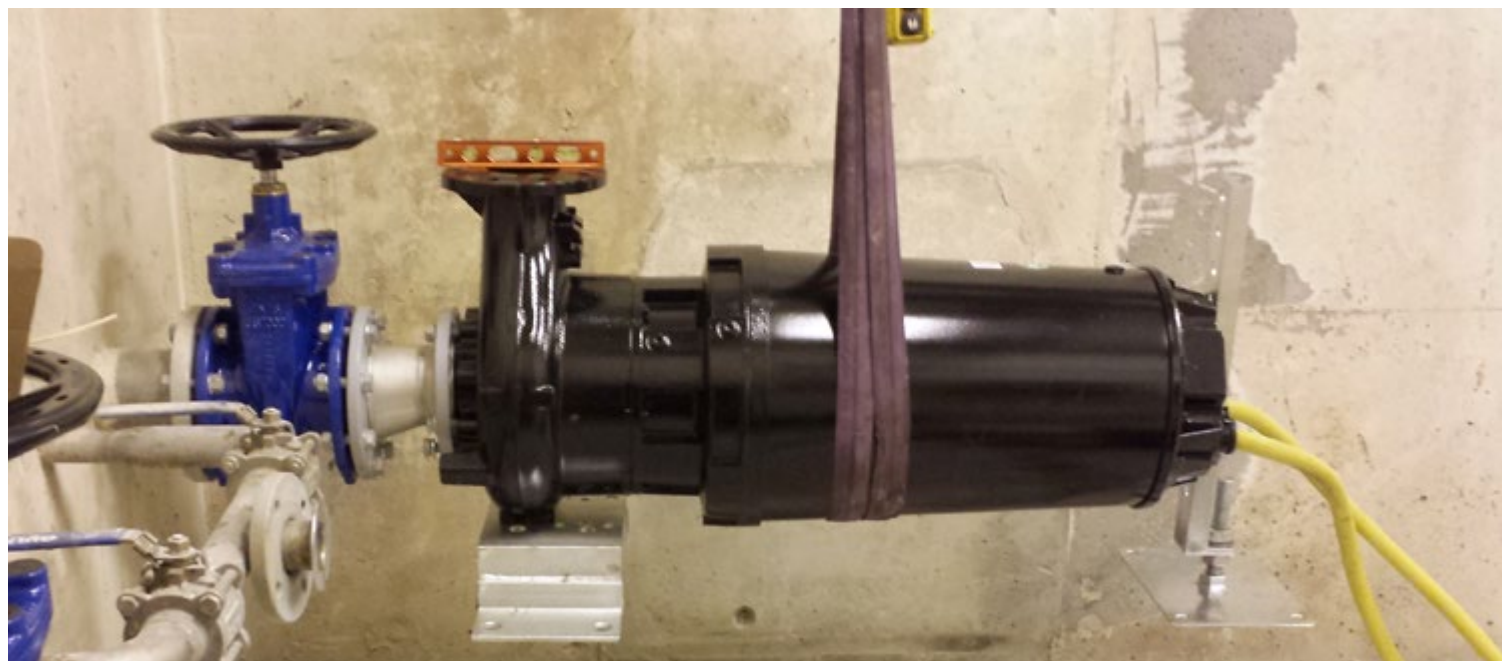
Sewage station

**PRODUCTS**

Uniqa V 100A 37/2 HD 240 - Nr. 2



UNIQA





# FRANCE TURBOT

**COUNTRY**

Tredarzec (France)

**PLANT/USE**

Lifting station

**PRODUCTS**

SBP 1500/6/200 - Nr. 15

SBP 1000/6/200 - Nr. 15



SBP





# POMMERY CHAMPAGNE CAVES

**COUNTRY**

France

**PLANT/USE**

Lifting stations

**PRODUCTS**

DGO 50/2 G50V



DGO





# PIPER HEIDSIECK CHAMPAGNE CAVES

**COUNTRY**

France

**PLANT/USE**

WWTP and lifting station

**PRODUCTS**

S-OXY 80 1/8055 35 - Nr. 1

MAN 400/4/80 A1FT - Nr. 1

DAC-N 80/80H - Nr. 1



AÉRATEUR SUBMERSIBLE



MAN



DAC H





# BEAUGRENELLE

COMMERCIAL CENTER - PARIS

**COUNTRY**

France

**PLANT/USE**

Fountains and water games

**PRODUCTS**

DRN 300/2/65 - Nr. 2

DRP 1500/2/80 - Nr. 2

MAN 400/2/65 - Nr. 2

APN 400/2/G50H - Nr. 2

DRP 1000/2/80 - Nr. 2



MAN



APN



DRP



DRN



DRP





# SAINT QUENTIN

OVAL SQUARE- YVELINES



## COUNTRY

France

## PLANT/USE

Fountains and water games

## PRODUCTS

DGP 750/4/100 CC - Nr. 4



DGP





# CITY AND WWTP

SAINT MARTIN

**COUNTRY**

France

**PLANT/USE**

WWTP

**PRODUCTS**

DRP 750/4/100 60HZ - Nr. 7

OXY 1/80/100



DRP



AÉRATEUR SUBMERSIBLE



# SAINT GERY FOUNTAIN

VALENCIENNES

**COUNTRY**

France

**PLANT/USE**

Fountains and water games

**PRODUCTS**

DRN 250/2/65 - Nr.5

DRN 300/2/65 - Nr.2

DRN 400/2/65 - Nr.4



DRN



# FOUNTAIN BRIARE PLAZA

VILLENEUVE-SUR-YONNE

**COUNTRY**

France

**PLANT/USE**

Fountain and water games

**PRODUCTS**

DRN 300/4/80



DRN



# FOUNTAIN

CRÉTEIL

**COUNTRY**

France

**PLANT/USE**

Fountain and water games

**PRODUCTS**

APP 750/2/G50H - Nr. 5

DRP 550/4/100 - Nr. 3



APP



DRP



# FOUNTAIN

BOIS COLOMBES

**COUNTRY**

France

**PLANT/USE**

Fountain and water games

**PRODUCTS**

DGO 150/2/G50H - Nr.2

DRP 1000/4/100 - Nr.4 + OXY 80/100



DGO



DRP



AÉRATEUR SUBMERSIBLE



# PLACE DE LA RÉPUBLIQUE

PARIS

**COUNTRY**

France

**PLANT/USE**

Fountain and water games

**PRODUCTS**

DGN 200/4/80 - Nr.1



DGN



# FOUNTAIN

VILLEPINTE

**COUNTRY**

France

**PLANT/USE**

Fountain and water games

**PRODUCTS**

DGN 200/4/100 - Nr. 2

DGN 200/4/80 - Nr. 2

DRP 750/4/100 - Nr. 3



DGN



DRP





# CAMPUS VAL DE BIÈVRES

**COUNTRY**

France

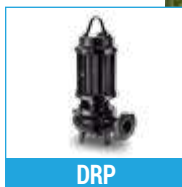
**PLANT/USE**

Fountain and water games

**PRODUCTS**

DRP 550/4/80 - Nr.2

DRP 750/4/80



DRP



# LA HOUSSAYE EN BRIE

**COUNTRY**

France

**PLANT/USE**

Fountain and water games

**PRODUCTS**

DGN 250/2/80 - Nr.5

MAN 250/2/80 - Nr.6



DGN



MAN



# HOSPITAL

BAYONNE



## COUNTRY

France

## PLANT/USE

Evacuation system

## PRODUCTS

Uniqa V 080B 15/2 AW 185 - Nr. 2



UNIQA







# SHOWROOM MERCEDES

PARIS



## COUNTRY

France

## PLANT/USE

Evacuation system

## PRODUCTS

DRN 400/2/65 HT - Nr. 2



DRN





# CENTERPARCS DE LOUDUN

LOUDUN

**COUNTRY**

France

**PLANT/USE**

Evacuation system

**PRODUCTS**

DRN 550/2/65 - Nr. 4



DRN





# LES DOCKS CENTRE COMMERCIAL

**COUNTRY**

France

**PLANT/USE**

Evacuation system

**PRODUCTS**

Uniqua OC 250H 15/4 AD 269 - Nr. 4

DAC 250/300V - Nr. 4



UNIQA





# RAMADA HOTELS

**COUNTRY**

Antalaya (Turkey)

**PLANT/USE**

Lifting station

**PRODUCTS**

DRE 200/2/G50V - Nr. 14



DRE





# HOLIDAY INN

**COUNTRY**

Istanbul (Turkey)

**PLANT/USE**

Lifting station

**PRODUCT**

DRE 200/2/G50V - Nr. 6

GRBluePRO 150 - Nr. 8



DRE



GR BLUEPRO





FER

CONSTRUCTIONS COMPANY



## COUNTRY

Turkey

## PLANT/USE

WWTP and lifting station

## PRODUCTS

DRE 200 - Nr. 2

DRBluePRO 150 - Nr. 2

DRBluePRO 100 - Nr. 4

APN 300/2/G50H - Nr. 4

APBluePRO 200 - Nr. 6

GRN 300 - Nr. 5

GRBluePRO 200 - Nr. 5



DRE

DR BLUEPRO

APN

AP BLUEPRO

GRN

GR BLUEPRO



## DUMANKAYA ADRES LOBI



## COUNTRY

Turkey

## PLANT/USE

Lifting station

## PRODUCTS

GRBluePRO 100 - Nr. 8

DRE 100/2/G50V - Nr. 4



GR BLUEPRO

DRE



# OTOPORT

GÜL CONSTRUCTIONS



**COUNTRY**  
Istanbul (Turkey)

**PLANT/USE**  
Lifting station

**PRODUCTS**  
GRBluePRO 100 - Nr. 4  
DRBluePRO 150 T - Nr. 4



GR BLUEPRO



DR BLUEPRO



# SKYTOWERS

AGAAGLU CONSTRUCTIONS



**COUNTRY**  
Turkey

**PLANT/USE**  
WWTP

**PRODUCTS**  
APN 300 - Nr. 2  
GRN 300 - Nr. 4



APN



GRN



# YORUM ISTANBUL SUITES

ÇALISKAN CONTS.

**COUNTRY**

Turkey

**PLANT/USE**

Lifting station

**PRODUCTS**

DRBlue 75 - Nr. 26



# ALEMDAG 1174 FLATS

EMLAK GYO (PUBLIC CORP.)

**COUNTRY**

Turkey

**PLANT/USE**

WWTP and lifting station

**PRODUCTS**

DRBluePRO 100 - Nr. 6

GRBluePRO 200 - Nr. 14



DR BLUEPRO



GR BLUEPRO



# ELAZIG AIRPORT

PUBLIC CORPORATION.



## COUNTRY

Turkey

## PLANT/USE

Lifting station

## PRODUCTS

GRBluePRO 100 - Nr. 4

DRE 75 - Nr. 6

DRE 100 - Nr. 4



# MARDIN AIRPORT

PUBLIC CORPORATION



## COUNTRY

Turkey

## PLANT/USE

WWTP

## PRODUCTS

DGBluePRO 75 - Nr. 6

GRBluePRO 100 - Nr. 8





# GRAND'ACQUE CLUB

**COUNTRY**

Antalya (Turkey)

**PLANT/USE**

Water games and fountains

**PRODUCTS**

SBN 4000/4/250 - Nr. 5



SBN



# COMMERCIAL AREA

**COUNTRY**

Athens (Greece)

**PLANT/USE**

Lifting station

**PRODUCTS**

DRX 300/2/65 - Nr. 6



DRX



# OLYMPIC STADIUM

**COUNTRY**

Athens (Greece)

**PLANT/USE**

Lifting station

**PRODUCTS**

GRN 400/2/G50H - Nr. 10

DRP 750/4/150 - Nr. 2

DRP 300/4/100 - Nr. 1



GRN



DRP





# MUNICIPALITY OF KIATO

**COUNTRY**

Kiato (Greece)

**PLANT/USE**

WWTP

**PRODUCTS**

SMP 750/4/150 - Nr. 2

MAN 300/4/100 - Nr. 2



SMP



MAN





# S.NIARCHOS FOUNDATION

NEW CULTURAL CENTER



## COUNTRY

Faliron (Greece)

## PLANT/USE

Lifting station

## PRODUCTS

BOXPRO M - Nr. 8

DGO 200 - Nr. 8



BOXPRO M  
1000L



DGO





# OLYMPIC CENTER

**COUNTRY**

Athens (Greece)

**PLANT/USE**

Lifting station

**PRODUCTS**

DRP 400/2/80 - Nr. 2

DRE 200/2/G50V - Nr. 2

DRN 250/2/65 - Nr. 18





# GENERAL HOSPITAL KYZYLORDA



**COUNTRY**  
Kazakhstan  
**PLANT/USE**  
WWTP  
**PRODUCTS**  
SBN 5000 - Nr. 5



SBN



# MARIYNSKY HOSPITAL



**COUNTRY**  
St. Petersburg (Russia)  
**PLANT/USE**  
Lifting station  
**PRODUCTS**  
MAN 550



MAN



# COTTAGE RESIDENCE PARK RAHIA

**COUNTRY**

Vsevoložskij Rayon (Russia)

**PLANT/USE**

Lifting station

**PRODUCTS**

MAN 550



# LENINSKOYE VILLAGE

**COUNTRY**

Russia

**PLANT/USE**

Lifting station

**PRODUCTS**

GRI 200

GRS 100





# SUPERMARKET

NOVAYA LINIYA



**COUNTRY**  
Odessa (Ukraine)

**PLANT/USE**  
WWTP

**PRODUCTS**  
MAN 550



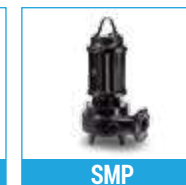
## MUNICIPALITIES OF ROMNY & KANEV



**COUNTRY**  
Romny and Kanev (Ukraine)

**PLANT/USE**  
WWTP

**PRODUCTS**  
DRP  
SMP  
SBN





# URBAN SEWAGE PLANTS



## COUNTRY

Priluki, Skadovsk, Volodarka, Borodyanka, Fastov, Donezk, Mironovka, Bar, Shostka, Tetiyev, Manykovka, Starobelsk, and more. (Ukraine)

## PLANT/USE

Urban Sewage Utility companies

## PRODUCTS

DRP  
SMP  
SBN  
MAN





# MUNICIPALITY OF CASTEL TOWN

**COUNTRY**

Castel Town (Ireland)

**PLANT/USE**

WWTP

**PRODUCTS**

DRN 300/4/80 - Nr. 2

MAN 200/4/80 - Nr. 2

DGI 100/4/80 - Nr. 2



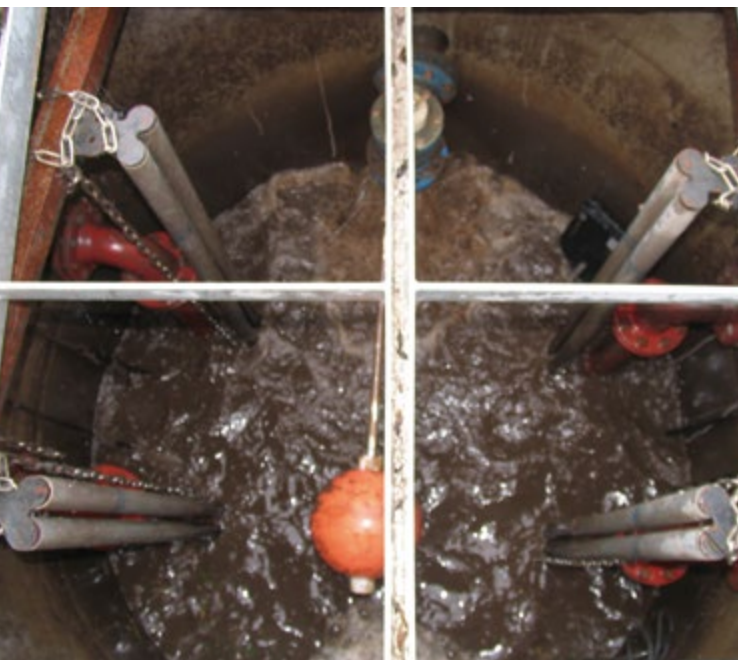
DRN



MAN



DGI





# MUNICIPALITY OF KILNMATJRA

**COUNTRY**

Kilnmatjra (Ireland)

**PLANT/USE**

WWTP

**PRODUCTS**

DGN 200/4/80 - Nr. 2

DGN 550/2/80 - Nr. 2



DGN





# MUNICIPALITY OF CHURCH TOWN

**COUNTRY**

Church Town (Ireland)

**PLANT/USE**

WWTP

**PRODUCTS**

DGN 300/4/80 - Nr. 4



DGN





# MUNICIPALITY OF HISMIRE

**COUNTRY**

Hismire (Ireland)

**PLANT/USE**

WWTP

**PRODUCTS**

DGN 150/4/80 - Nr. 2

APN 250/2/G40H - Nr. 2



DGN



APN





# IRISH WATER

**COUNTRY**

Dunmore (Ireland)

**PLANT/USE**

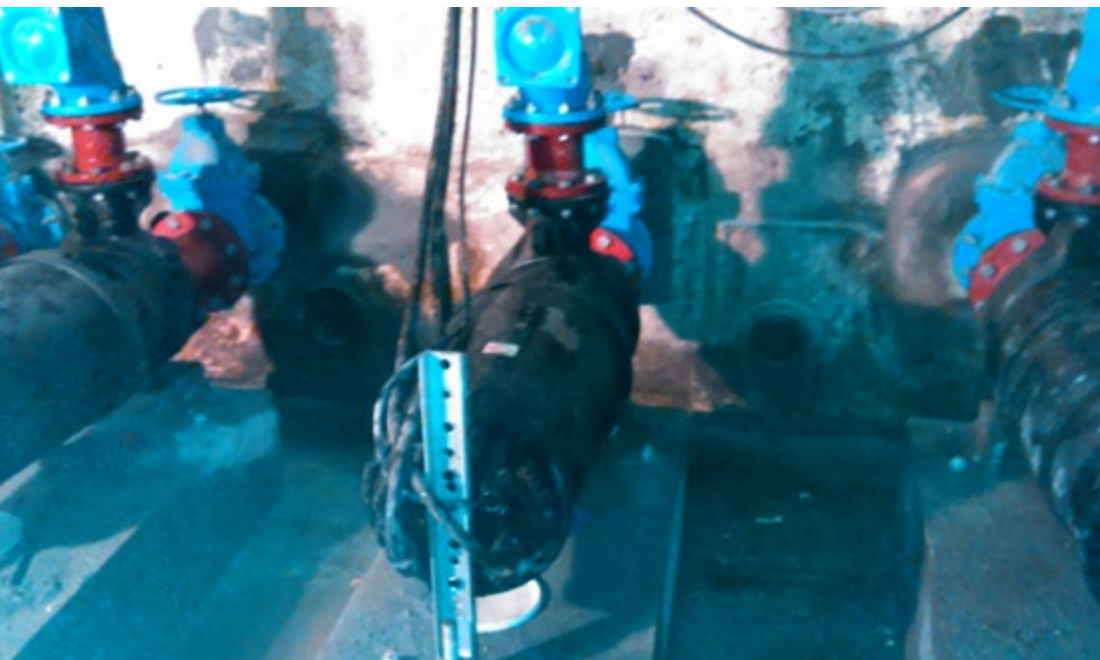
Unscreened wastewater

**PRODUCTS**

Uniqua V 100C 30/4 AD 190 - Nr. 3



UNIQA





# RESTAURANT

**COUNTRY**

Viseu (Portugal)

**PLANT/USE**

Lifting station

**PRODUCTS**

DRE 150



DRE





## HOTEL



## COUNTRY

Lisbon (Portugal)

## PLANT/USE

WWTP

## PRODUCTS

DGN 550/2/80 - Nr. 2



DGN





# LUL VICTORIA STATION



## COUNTRY

London (United Kingdom)

## PLANT/USE

Lifting station

## PRODUCTS

DGN 300/4/80 Ex - Nr. 2



DGN





# ALEXANDER STADIUM

**COUNTRY**

Birmingham (United Kingdom)

**PLANT/USE**

WWTP

**PRODUCTS**

BOXPRO S + DGN 300/4/80

BOXPRO J + DGN 400/4/80

**BOXPRO J**  
10000÷18000L**BOXPRO S**  
4000÷9500L**DGN**

85





# BRITANNIA STADIUM



**COUNTRY**  
Stoke on Trent (United Kingdom)

**PLANT/USE**  
WWTP

**PRODUCTS**  
BOXPRO S  
DGO 50



**BOXPRO S**  
4000-9500L



**DGO**





# BIRMINGHAM LIBRARY

**COUNTRY**

Birmingham (United Kingdom)

**PLANT/USE**

WWTP

**PRODUCTS**

BOXPRO J

BOXPRO S

BOXPRO V

GRF 200/2/50

DGN 300/4/80 Ex

DGN 400/2/80 Ex



**BOXPRO J**  
10000÷18000L



**BOXPRO S**  
4000÷9500L



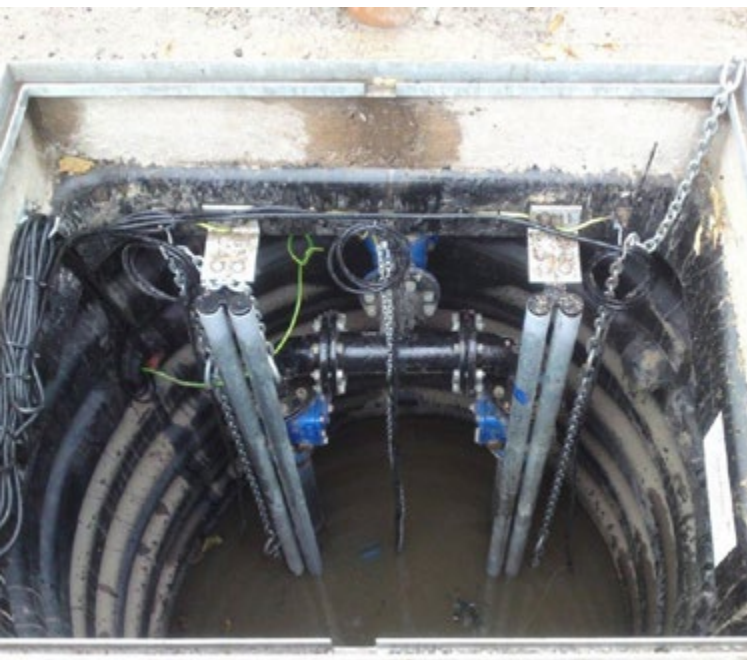
**BOXPRO V**  
2000L



**GRF**



**DGN**





# BRITNED POWER STATION

**COUNTRY**

United Kingdom

**PLANT/USE**

WWTP

**PRODUCTS**

DGF 75/2/G50 Ex - Nr. 2

DGN 300/2/80T - Nr. 2



DGF



DGN





# ROYAL OAK PORTAL

**COUNTRY**

London (United Kingdom)

**PLANT/USE**

WWTP

**PRODUCTS**

MAN 550/2/80 - Nr. 2

DGO 200/2/80 - Nr. 2





# OAKENSHAW BECK

AGBRIGG



## COUNTRY

Oakenshaw (United Kingdom)

## PLANT/USE

WWTP

## PRODUCTS

SBN 2500/6/300 - Nr. 3



SBN





# RETAIL PARK

**COUNTRY**

Prestatyn (United Kingdom)

**PLANT/USE**

Lifting station

**PRODUCTS**

DGO 200/2/80 - Nr. 4

DGO 100/2/50 - Nr. 4



DGO





# INTERNAL DRAINAGE BOARD

**COUNTRY**

Selby (England, UK)

**PLANT/USE**

Lifting station

**PRODUCTS**

Uniqa OC 250C11/6



UNIQA





# CARGO CENTER

**COUNTRY**

Manchester (United Kingdom)

**PLANT/USE**

Lifting station

**PRODUCTS**

DRN 400/4/80 - Nr. 8

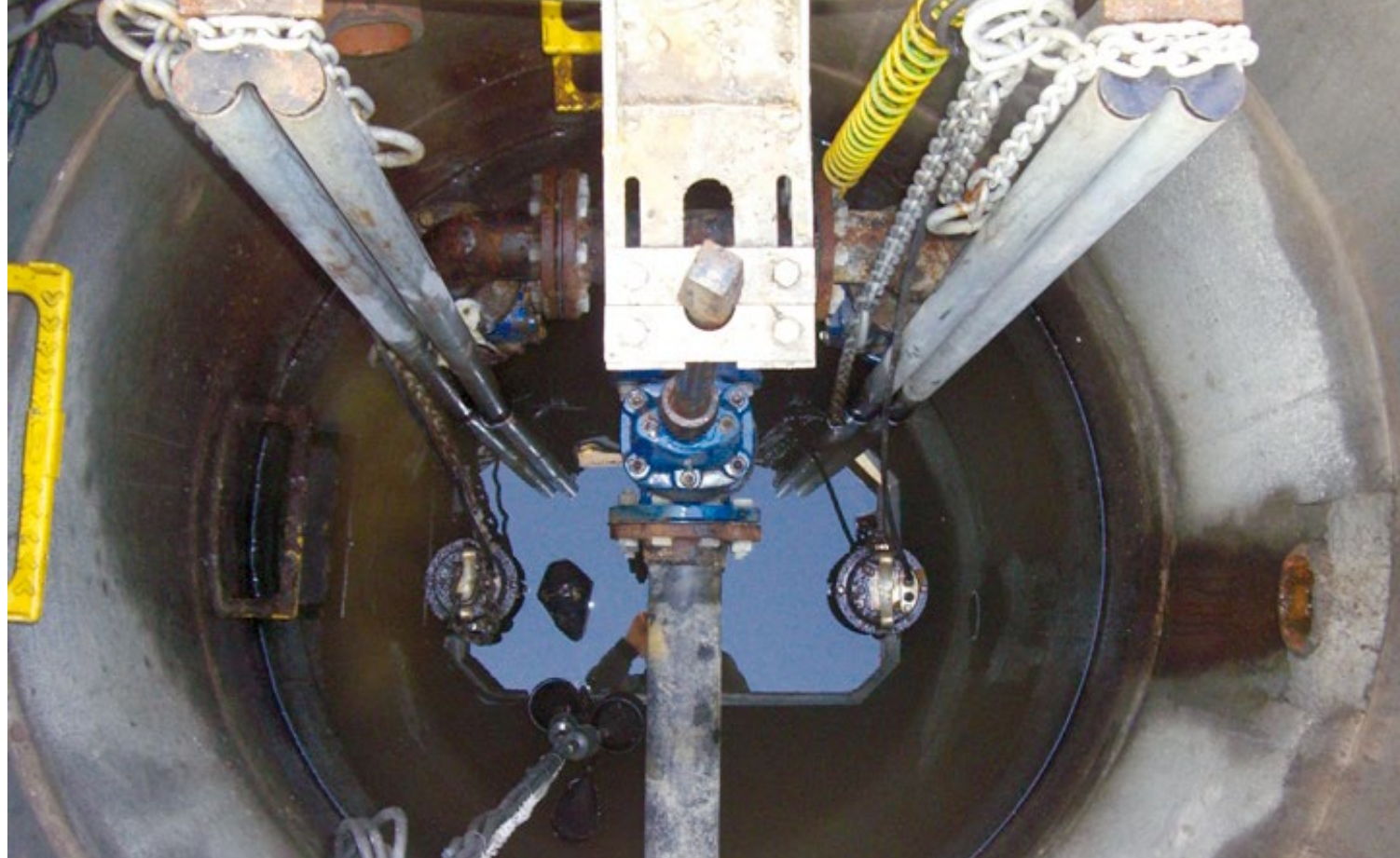
SMP 1000/4/100 - Nr. 4



DRN



SMP





# SUNBORN HOTELS

**COUNTRY**

London (Great Britain)

**PLANT/USE**

Sunborn Yacht Hotel Boat/Lifting station

**PRODUCTS**

DGN 750/4/80 - Nr. 1



DGN





# GELREDOME VOETBALSTADION

**COUNTRY**

The Netherlands

**PLANT/USE**

Lifting stations

**PRODUCTS**

GRN 300/4/80



GRN





# SLINGELAND HOSPITAL

**COUNTRY**

The Netherlands

**PLANT/USE**

Lifting station

**PRODUCTS**

GRF 200/2/G40 A1

DGN 300/2/80

SBP 750/4/150



GRF



DGN



SBP





# PALEIS HET LOO MUSEUM

**COUNTRY**

The Netherlands

**PLANT/USE**

WWTP

**PRODUCTS**

Uniqa OC 150A 15/4 - Nr.4



UNIQA





# DUTCH ZOO BEAR RESORT

**COUNTRY**

The Nederlands

**PLANT/USE**

WWTP

**PRODUCTS**

Uniqa OC 100A 9/4



UNIQA





# KIA MOTORS

**COUNTRY**

Zilina (Slovakia)

**PLANT/USE**

Lifting station

**PRODUCTS**

SBN 5000/4/200 - Nr. 3



SBN





# CHATEAU BELÀ

**COUNTRY**

Makow (Slovakia)

**PLANT/USE**

Lifting station

**PRODUCTS**

DRE 200/2/G50H - Nr. 4



DRE





# T&M AUTOHOF

**COUNTRY**

Nove Zamky (Slovakia)

**PLANT/USE**

Lifting station

**PRODUCTS**

MAN 400/4/100 - Nr. 2



MAN



101



# MUNICIPALITY OF POZAREVAC

**COUNTRY**

Pozarevac (Serbia)

**PLANT/USE**

WWTP

**PRODUCTS**

SBN 3000/4/150 - Nr. 3



SBN



# SREBRO LAKE

**COUNTRY**

Srebro lake (Serbia)

**PLANT/USE**

Lifting station

**PRODUCTS**

SBN 5000/4/200 - Nr. 1



SBN





# SREDNJI BANAT

**COUNTRY**

Zrenjanin (Serbia)

**PLANT/USE**

Drainage plant

**PRODUCTS**

SBN 2500/6/300 - Nr. 1



SBN





# NEW RESIDENTIAL AREA

**COUNTRY**

Madrid (Spain)

**PLANT/USE**

Lifting station

**PRODUCTS**

DRP 1500/2/100 - Nr. 4



DRP





# TAV SKOPJE AIRPORT

**COUNTRY**

Macedonia

**PLANT/USE**

WWTP and lifting station

**PRODUCTS**

GRBluePRO 100 - Nr. 6

DGBlue PRO 75 - Nr. 6



GR BLUEPRO



DG BLUE





The background is a green-tinted photograph of an industrial plant with various pipes, tanks, and structures. A large white circle is centered on the image, containing the text 'AFRICA / MIDDLE EAST' in white, uppercase, sans-serif font.

AFRICA /  
MIDDLE EAST



# AMRAN BRIDGE



**COUNTRY**

Yemen

**PLANT/USE**

WWTP

**PRODUCTS**

SBN 5000/4/250 - Nr. 2



# PRESIDENTIAL BRIDGE



**COUNTRY**

Yemen

**PLANT/USE**

WWTP

**PRODUCTS**

SBN 5000/4/250 - Nr. 5







# ZIG ZAG TOWERS



**COUNTRY**

Doha (Qatar)

**PLANT/USE**

Lifting stations

**PRODUCTS**

GRN 400/4/100 - Nr.8

GR Blue PRO 150/2/G40 - Nr.6





# MINISTRY OF OIL

## PETROLEUM PLANTS



### COUNTRY

Iraq

### PLANT/USE

Lifting station

### PRODUCTS

DRF 75/2/G40V A1CM-EX - Nr. 60



DRF





# COMMERCIAL AREA

**COUNTRY**

Basra (Iraq)

**PLANT/USE**

WWTP

**PRODUCTS**

DRP 2000

SBN 4000

SBN 5000

Uniqa OC300C 90/6AW



# KING FAHD CAUSEWAY BRIDGE

**COUNTRY**

Bahrain (Saudi Arabia)

**PLANT/USE**

Lifting station

**PRODUCTS**

GR Blue PRO 150-200 - Nr. 22





# NURAI ISLAND



**COUNTRY**  
Abu Dhabi (United Arab Emirates)

**PLANT/USE**  
Lifting station

**PRODUCTS**  
GRN 250/2/G40H  
GRP 750/2/G50H



111



# CIA BUILDING



**COUNTRY**  
Jordan

**PLANT/USE**  
WWTP

**PRODUCTS**  
GRE 200/2/G50H - Nr. 2





# PUBLIC SECURITY

**COUNTRY**

Jordan

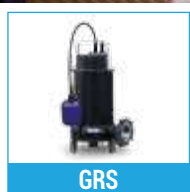
**PLANT/USE**

Lifting station

**PRODUCTS**

GRE 200/2/G50H - Nr. 1

GRS 100/2/G40H - Nr. 2



112



# CIVIL DEFENSE

**COUNTRY**

Jordan

**PLANT/USE**

Lifting station

**PRODUCTS**

DGE 200/2/G50V - Nr. 2

GRS 100/2/G40H - Nr. 1





# JOWAYDEH PRISON

**COUNTRY**

Jordan

**PLANT/USE**

WWTP

**PRODUCTS**

DGN 250/2/65 - Nr. 6

DGN 550/2/65 - Nr. 2



DGN



# SCIENTIFIC APPLIED UNIVERSITY

**COUNTRY**

Jordan

**PLANT/USE**

Lifting station

**PRODUCTS**

DRE 50/2/G32V - Nr. 1

DRE 200/2/G50V - Nr. 1



DRE



# AMMAN MUNICIPALITY

**COUNTRY**

Jordan

**PLANT/USE**

Lifting station

**PRODUCTS**

DGE 50/2/G50V - Nr. 2

DR Blue 100/2/G32V - Nr. 1

DGE 150/2/G50V - Nr. 1



# AL-MAFRAQ PARK

**COUNTRY**

Jordan

**PLANT/USE**

Lifting station

**PRODUCTS**

DRE 50/2/G32V - Nr. 2





# MINISTERO DELLE FINANZE

**COUNTRY**

Jordan

**PLANT/USE**

WWTP

**PRODUCTS**

DGE 50/2/G50V - Nr. 2  
DGE 75/2/G50V - Nr. 2  
DGE 150/2/G50V - Nr. 3



# UNIVERSITÀ GIORDANA

**COUNTRY**

Jordan

**PLANT/USE**

Lifting station

**PRODUCTS**

DRE 50/2/G32V - Nr. 1  
DRE 200/2/G50V - Nr. 1





# STEM CELL

RESEARCH CENTRE

**COUNTRY**

Jordan

**PLANT/USE**

Lifting station

**PRODUCTS**

DRE 50/2/G32V - Nr. 1

GRS 100/2/G40H - Nr. 1



# AL-RA'1

PRINTING PRESS

**COUNTRY**

Jordan

**PLANT/USE**

WWTP

**PRODUCTS**

APN 250/2/G50V - Nr. 2

APN 300/2/G50V - Nr. 2

MAN 550/2/65 - Nr. 2

MAN 550/2/80 - Nr. 2

DRE 200/2/G50V - Nr. 4





# MADA'EN MARKET

**COUNTRY**

Jordan

**PLANT/USE**

Lifting station

**PRODUCTS**

DRE 200/2/G50V - Nr. 1

DGE 200/2/G50V - Nr. 5



DRE



DGE



# MINISTRY OF AGRICULTURE

**COUNTRY**

Jordan

**PLANT/USE**

Lifting station

**PRODUCTS**

DRE 100/2/G32V - Nr. 4



DRE



# CAPITAL SECTOR BRIDGE

**COUNTRY**

Yemen

**PLANT/USE**

WWTP

**PRODUCTS**

SBN 5000/4/250 - Nr. 9



# LEBANESE NATIONAL LIBRARY

**COUNTRY**

Lebanon

**PLANT/USE**

Lifting station

**PRODUCTS**

DG Blue 75/2/G40V - Nr. 2

APBluePRO 150/2/G40H - Nr. 2





# PARALLEL TOWERS

**COUNTRY**

Lebanon (Beirut)

**PLANT/USE**

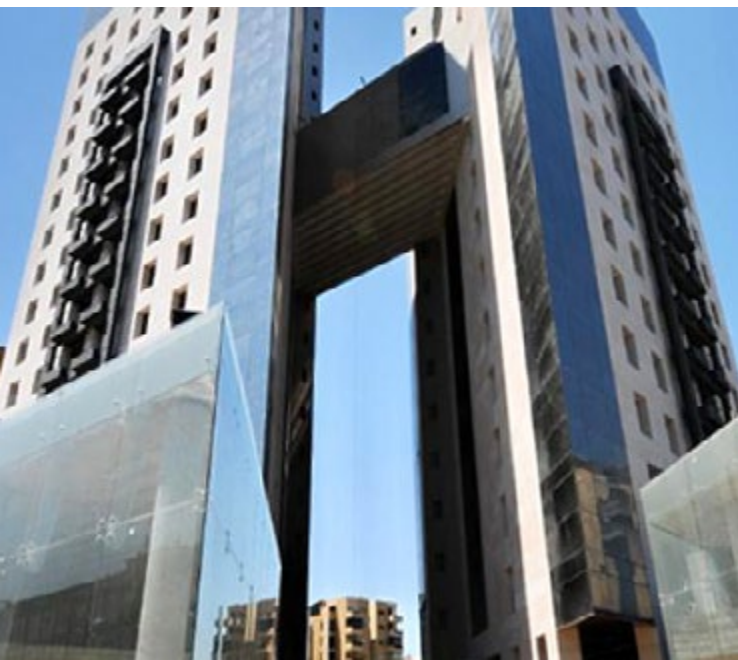
WWTP

**PRODUCTS**

DG Blue 200/2/G50V - Nr. 4



DG BLUE





# PEPSI HUB

**COUNTRY**

Lebanon

**PLANT/USE**

Lifting station

**PRODUCTS**

DRE 200/2/G50H - Nr. 2

DG Blue 50/2/G40H - Nr. 2



DRE



DG BLUE



120



# TALLEH

**COUNTRY**

Lebanon

**PLANT/USE**

Lifting station

**PRODUCTS**

DGBluePRO 200/2/G50V - Nr. 2

DRBluePRO 75/2/G32V - Nr. 2



DG BLUEPRO



DR BLUEPRO



# ZAYTOUNE BAY

BEIRUT MARINA



## COUNTRY

Beirut (Lebanon)

## PLANT/USE

WWTP and lifting station

## PRODUCTS

DRY 400/4/80 - Nr. 2

DRY 300/4/80 - Nr. 34

DGX 100/2/G50V - Nr. 2



DRY



DGX





# SAVOLA GROUP

EDIBLE OIL REFINING



## COUNTRY

Algeria

## PLANT/USE

WWTP and lifting station

## PRODUCTS

DGN 200/4/80 - Nr. 8

DGO 150/4/80 - Nr. 6



DGN



DGO





# DAWMAT AL JANDAL

**COUNTRY**

Saudi Arabia

**PLANT/USE**

Water lifting

**PRODUCTS**

UNIQA Uniqa OC 300B 90/4 AW - Nr. 2





# SAUDI ARABIA GOVERNMENT



**COUNTRY**  
Saudi Arabia

**PLANT/USE**  
WWTP

**PRODUCTS**  
OC 300G 220/4 AW - Nr. 2



UNIQA





ONEE

COMMUNE RURALE D'ECH-CHELLALATE



## COUNTRY

Casablanca, Maroc

## PLANT/USE

Stations de relevage

## PRODUCTS

SBN 5000/4/150 G1LT - Nr.2

SBN 5000/4/150 H1LT - Nr.2



SBN





## MINISTRY OF HEALTH



## COUNTRY

Jordan

## PLANT/USE

WWTP

## PRODUCTS

DGE 100/2/G50V - Nr. 2



DGE



## NEW BMC HOSPITAL

BENGHAZI,



## COUNTRY

Libya

## PLANT/USE

Evacuation system

## PRODUCTS

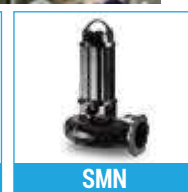
Uniqa V080B 15/2AW 185 EX - Nr. 2

SMN 3000/4/150 A1LT - Nr. 4 / DRP 750/4/100 A0HT - Nr. 4

APN 300/2/G50H A1DT - Nr. 1 / DGN 400/4/80 A1FT - Nr. 1



UNIQA



SMN



DRP



APN



DGN





ASIA / OCEANIA



# AGIP KCO KARABATAN



**COUNTRY**  
Kazakhstan

**PLANT/USE**  
Lifting station

**PRODUCTS**  
DRE 75/2/G32V - Nr. 1



DRE





# RAFFLES COUNTRY CLUB

**COUNTRY**

Singapore

**PLANT/USE**

Lifting station

**PRODUCTS**

SMP 2000/4/200 - Nr. 4



SMP





# MARINA BAY F1 STREET CIRCUIT

**COUNTRY**

Singapore

**PLANT/USE**

Lifting station

**PRODUCTS**

DRP 1000/4/150 - Nr. 2

DRN 250/2/80 - Nr. 1



DRP



DRN





# MARINA BARRAGE

**COUNTRY**

Singapore

**PLANT/USE**

Lifting and dewatering station

**PRODUCTS**

SBN 4000/4/250 - Nr. 2

DRY 400/2/80 - Nr. 2

DGX 50/2/G50V - Nr. 4

DRN 200/2/80 - Nr. 2

DRB 200/2/G50V - Nr. 1



SBN



DRY



DGX



DRN



DRB





# INTERNATIONAL AIRPORT

**COUNTRY**

Changi (Singapore)

**PLANT/USE**

WWTP and lifting station

**PRODUCTS**

DRN - Nr. 18

DRP - Nr. 18



132





# GENERAL HOSPITAL

**COUNTRY**

Singapore

**PLANT/USE**

WWTP and lifting station

**PRODUCTS**

DGO - Nr. 40

DRN - Nr. 40

DRP - Nr. 40



DGO



DRN



DRP

133





# UNIVERSAL STUDIO

**COUNTRY**

Singapore

**PLANT/USE**

WWTP and lifting station

**PRODUCTS**

SBN 5000 - Nr. 2

DRP 2000 - Nr. 8





# INTERNATIONAL AIRPORT



**COUNTRY**  
Bangkok (Thailand)

**PLANT/USE**  
Lifting station

**PRODUCTS**  
DRF - Nr. 20







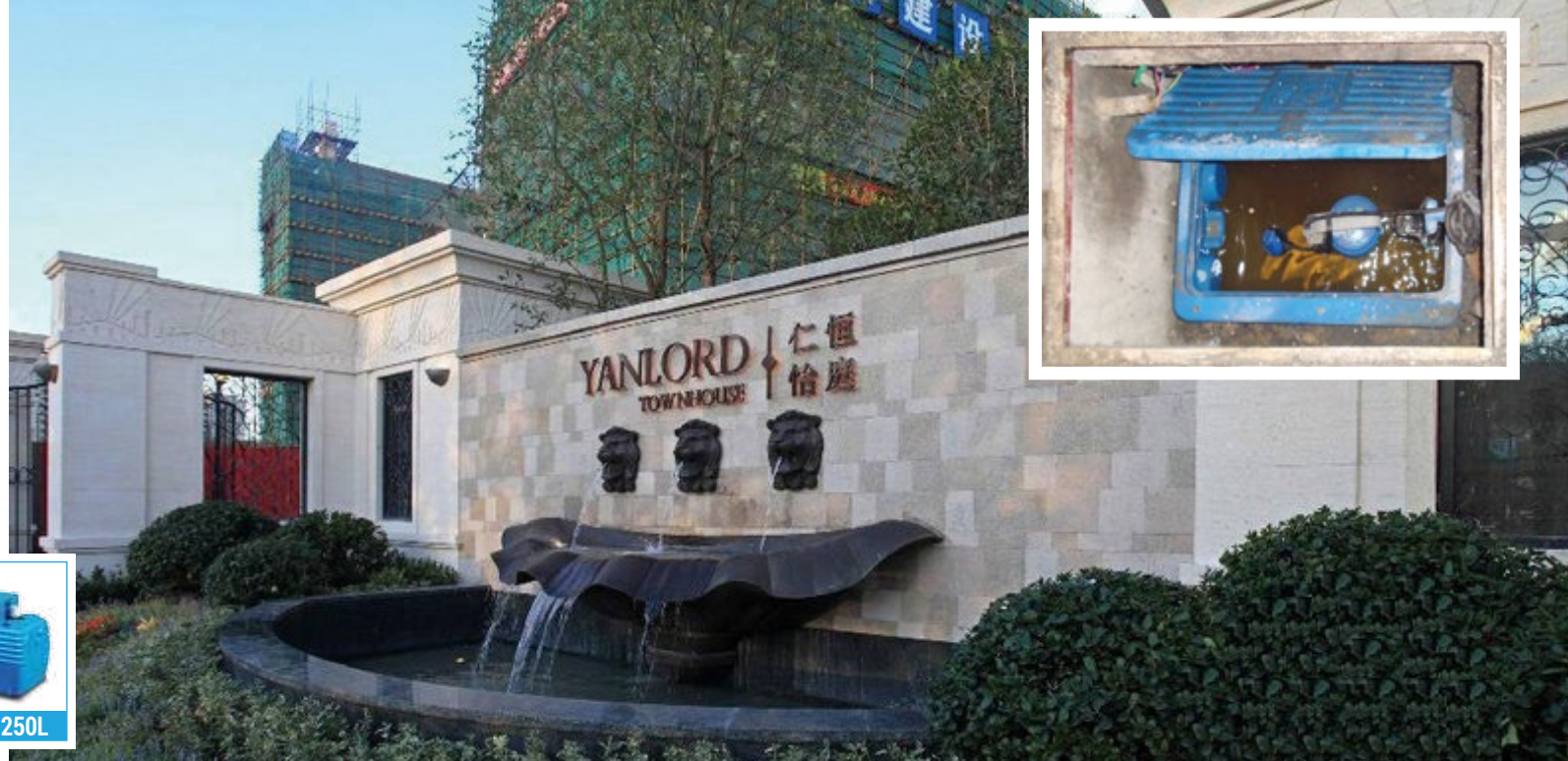
# YANLORD YI TING VILLA



**COUNTRY**  
Shanghai (China)

**PLANT/USE**  
Lifting station

**PRODUCTS**  
BlueBox 250L - Nr. 70



# TOMSON



**COUNTRY**  
Shanghai (China)

**PLANT/USE**  
WWTP

**PRODUCTS**  
GRBluePRO 150/2/G40H - Nr. 10





## FOSHAN



## COUNTRY

Foshan (China)

## PLANT/USE

Lifting station

## PRODUCTS

SBN 3000/4/200 - Nr 3



## TAOHUANJIANG NUCLEAR STATION



## COUNTRY

Hunan China

## PLANT/USE

Lifting station

## PRODUCTS

DRY 750/2/80 - Nr. 4

DGX 150/2/G50V - Nr. 4





# XIANYANG AIRPORT

**COUNTRY**

Xi'an (China)

**PLANT/USE**

Lifting station

**PRODUCTS**

BlueBox 400L - Nr. 36

APBluePRO - Nr. 36

MAN - Nr. 36



BLUEBOX 400L



AP BLUEPRO



MAN

138





# CROWNE PLAZA HOTELS

**COUNTRY**

Xi'an (China)

**PLANT/USE**

Lifting station

**PRODUCTS**

DRP 1000/2/80 - Nr. 2



DRP





# ASIAN GAMES STADIUM

**COUNTRY**

Guangzhou (China)

**PLANT/USE**

Lifting station

**PRODUCTS**

BlueBox 400L - Nr. 5

**BLUEBOX 400L**



# HIGH-SPEED RAILWAY STATION

**COUNTRY**

Wuxi (China)

**PLANT/USE**

Lifting station

**PRODUCTS**

BlueBox 400L - Nr. 4



BLUEBOX 400L





# ONE LINK WALK SQUARE



**COUNTRY**  
Guangzhou (China)

**PLANT/USE**  
WWTP

**PRODUCTS**  
BlueBox 400L - Nr. 6



BLUEBOX 400L





# SUN YAT-SEN

UNIVERSITY HOSPITAL



## COUNTRY

Guangzhou (China)

## PLANT/USE

Lifting station

## PRODUCTS

BlueBox 400L - Nr. 5



BLUEBOX 400L





# WEST RAILWAY STATION

**COUNTRY**

Tianjin (China)

**PLANT/USE**

WWTP

**PRODUCTS**

GRBluePRO 200/2/G40H - Nr. 4

BlueBox 90L - Nr. 4

BlueBox 400L - Nr. 4



GR BLUEPRO



BLUEBOX 90L



BLUEBOX 400L





# XUELONG



**COUNTRY**  
Shanghai (China)

**PLANT/USE**  
Lifting station

**PRODUCTS**  
SMP 750/2/80 - Nr. 2



SMP





## WHARF HOLDINGS



## COUNTRY

Suzhou China

## PLANT/USE

Lifting station

## PRODUCTS

DRN 300/2/65 - Nr. 63



DRN



青山湖玫瑰园

百年风华 誉

GREENTOWN ROSS



## GREENTOWN



## COUNTRY

Hangzhou (China)

## PLANT/USE

Lifting station

## PRODUCTS

DR-Steel 75 - Nr. 150

GRBluePRO 150/2/G40H - Nr. 150



DR-STEEL



GR BLUEPRO



# MIRAMAR HOTELS

**COUNTRY**

Hongkong (China)

**PLANT/USE**

WWTP

**PRODUCTS**

GRS 100/2/G40H - Nr. 5

APN 550/2/G50H - Nr. 5

GRN 550/2/G50H - Nr. 5



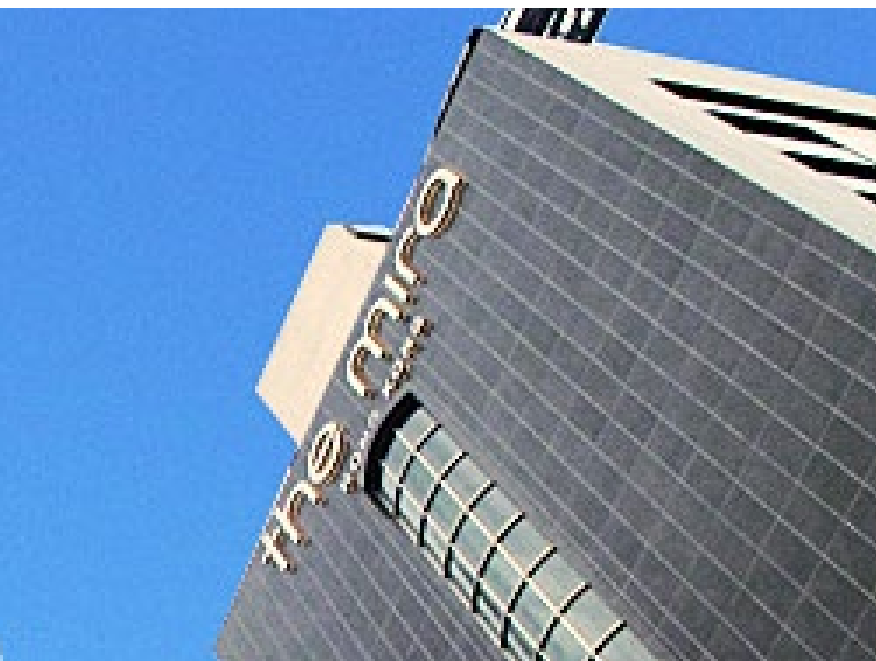
GRS



APN



GRN





# HONG KONG POLICE

**COUNTRY**

Hong Kong China

**PLANT/USE**

Lifting station

**PRODUCTS**

GRS 100/2/G40H - Nr. 2



GRS





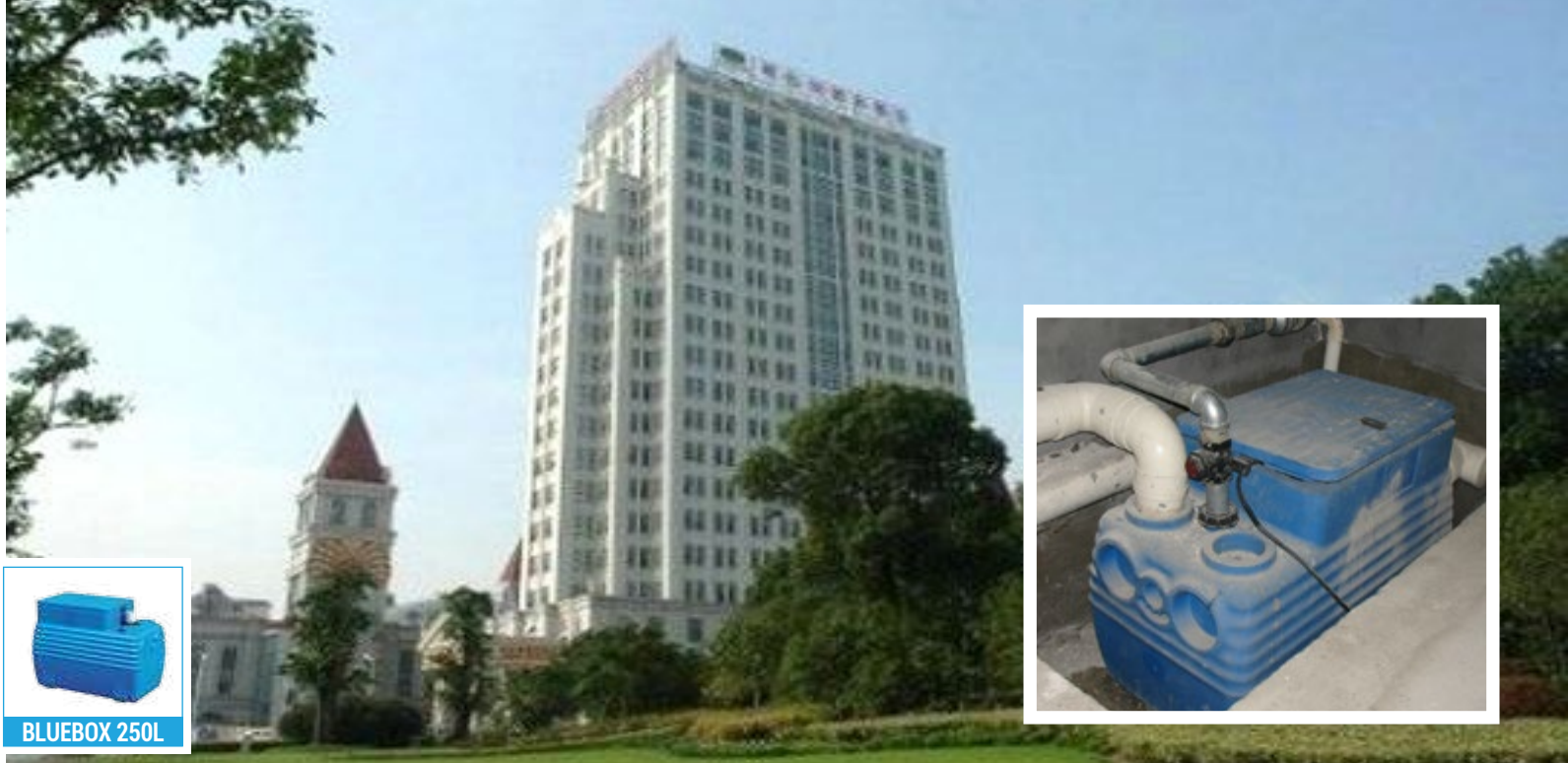
# VIENNA PLAZA



**COUNTRY**  
Shanghai (China)

**PLANT/USE**  
Lifting station

**PRODUCTS**  
GR Blue PRO 100 - Nr. 10  
BlueBOX 250L



# SM CITY CENTER



**COUNTRY**  
Xiamen (China)

**PLANT/USE**  
Lifting station

**PRODUCTS**  
GR Blue PRO 100 - Nr. 4  
GRE 200/2/G40H - Nr. 4





# CADBURY FOOD CO.



**COUNTRY**  
Beijing (China)

**PLANT/USE**  
WWTP

**PRODUCTS**  
DG Blue PRO 200 - Nr. 5



DG BLUEPRO



# MEIHUASHANZHUANG



**COUNTRY**  
Shenzhen (China)

**PLANT/USE**  
Lifting station

**PRODUCTS**  
DR Blue 75 - Nr. 3  
DG Blue 75 - Nr. 3



DR BLUE



DG BLUE



# GOVERNMENT MUNICIPALITY



**COUNTRY**  
Bangkok (Thailandia)

**PLANT/USE**  
Drainage Pump Station

**PRODUCTS**  
UNIQA Uniqa OC 300B 90/4 AW





# GOVERNMENT MUNICIPALITY - THAILAND



**CLIENT**  
Ministry of water and wastewater

**PLANT/USE**  
Lifting station lake

**PRODUCTS**  
UNIQA Uniqa OC 500C 250/4 AD - Nr. 10



UNIQA





# YINCHUAN SAND LAKE

**COUNTRY**

China

**PLANT/USE**

Wastewater Plant

**PRODUCTS**

MAN 550/2/80 - Nr. 2



MAN



BOXGRP





# PUNING COMMUNITY - CHENGDE

**COUNTRY**

China

**PLANT/USE**

Domestic sewage discharge solution

**PRODUCTS**

N Series - Nr. 2

BoxGRP - Nr. 1



154





# SUIXI COUNTY

**COUNTRY**

Huaibei City, China

**PLANT/USE**

Pingshan Power Plant

**PRODUCTS**

Uniqa OC200G 132/4AW 460 - Nr. 1



UNIQA





# SUNMAX TECH PLAZA

**COUNTRY**

Shenzhen, China

**PLANT/USE**

WWTP and lifting station

**PRODUCTS**

BoxPRO V



**BOXPRO V**  
**2000L**





# REGIONAL COUNCIL

**COUNTRY**

Central Otago, New Zealand

**PLANT/USE**

WWTP and lifting station

**PRODUCTS**

Uniqua OC 100F 50Hz 45kW - Nr. 2

DAC 150/150V - Nr. 2





# WANDOONA QUARRY MOREE



UNIQA





# NINGBO HUAMAO DONGQIANHU HOTEL

**COUNTRY**

Ningbo, China

**PLANT/USE**

WWTP and lifting station

**PRODUCTS**

BoxGRP - Nr. 1

ZUG OC100F 7,5/4AD - Nr. 2



UNIQA



BOXGRP





The image shows a complex industrial facility, likely a refinery or chemical plant, at night. The scene is filled with tall distillation columns, intricate piping, and walkways. The lighting is a mix of warm, low-key ambient light and bright, focused spotlights that create a dramatic, high-contrast atmosphere. A large, white, semi-transparent circle is superimposed over the center of the image, framing the text. The overall color palette is dominated by deep reds, oranges, and browns, with the white text providing a sharp contrast.

# NORTH AMERICA



# SHOPPING CENTER STATION

**COUNTRY**

Delray Beach, Florida (USA)

**PLANT/USE**

WWTP and lifting station

**PRODUCTS**

GRN 550/2/G50H - Nr. 2

GRN 300/2/G50H - Nr. 2



GRN





# FLORIDA TURNPIKE HIGHWAY

**COUNTRY**

Florida (USA)

**PLANT/USE**

WWTP and lifting station

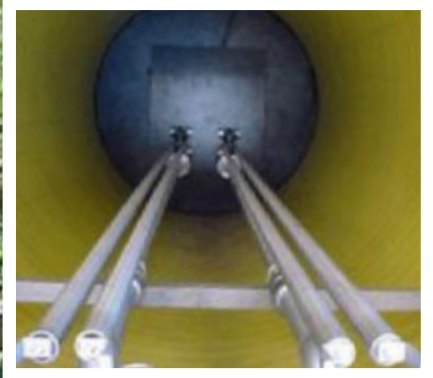
**PRODUCTS**

GRN 550/2/G50H - Nr. 2

GRN 300/2/G50H - Nr. 2



162



# HDPE MOPS STATION

**COUNTRY**

Palm Beach, Florida (USA)

**PLANT/USE**

Lifting station

**PRODUCTS**

GRN 550/2/G50H - Nr. 2







# HEAVY RESIDENTIAL SEWAGE & WASTEWATER

ATLANTIC ENVIRONMENTAL SYSTEMS, INC.



**COUNTRY**

Lake Worth, Florida (USA)

**PLANT/USE**

WWTP

**PRODUCTS**

Uniqa Uniqa V080B 18,5/2 AW 165 - Nr. 2



UNIQA







# MINOR LEAGUE BASEBALL STADIUM

ATLANTIC ENVIRONMENTAL SYSTEMS, INC.



## COUNTRY

Palm Beach, Florida (USA)

## PLANT/USE

Lifting station

## PRODUCTS

UNIQA Uniqa 20HP/15kW - Nr. 2

DAC 100 - Nr. 2



UNIQA



DAC V







## Electrical submersible pumps

A wide range of highly efficient motors, hydraulics optimised for the duty point and innovative materials for a vast variety of uses.

## Lifting stations

An effective solution for collecting and pumping wastewater to the sewer system, when a gravity feed is not available.

## Aeration and mixing systems

Vast range of disc-shaped and tubular air diffusers, submerged aerators, mixers and flow-makers with self-cleaning propellers.

## Accessories

Hydraulic and electrical accessories to cover all your plant's installation and operating needs.



# ZENIT GROUP IN THE WORLD

WITH THE INTERNATIONAL PRESENCE WE CAN  
MANAGE OUR CUSTOMERS' NEEDS DIRECTLY  
THANKS TO OUR TERRITORIAL



**ZENIT EUROPE**  
SALES OFFICE  
& REGIONAL OFFICE  
FOR EUROPE, THE MIDDLE  
EAST AND AFRICA

**ZENIT ITALIA**  
PRODUCTION SITE  
& SALES OFFICE  
FOR THE ITALIAN MARKET

**ZENIT ASIA PACIFIC**  
SALES OFFICE  
& REGIONAL OFFICE  
FOR THE ASIAN-PACIFIC  
AND OCEANIC MARKET

**ZENIT PUMPS SUZHOU**  
PRODUCTION SITE  
& SALES OFFICE  
FOR THE CHINESE MARKET



# REFERENCE BOOK



water solutions

*follow us*



zenit.com