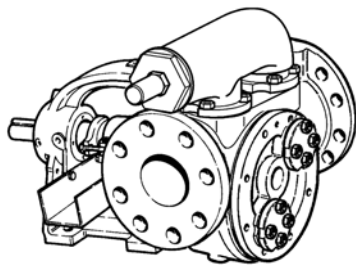
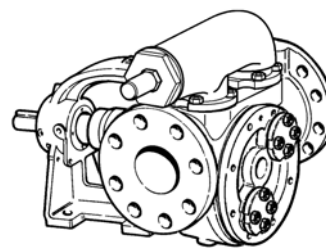


# DISTINTA DELLE PARTI COSTITUENTI LE POMPE ROTATIVE VOLUMETRICHE SERIE " V "

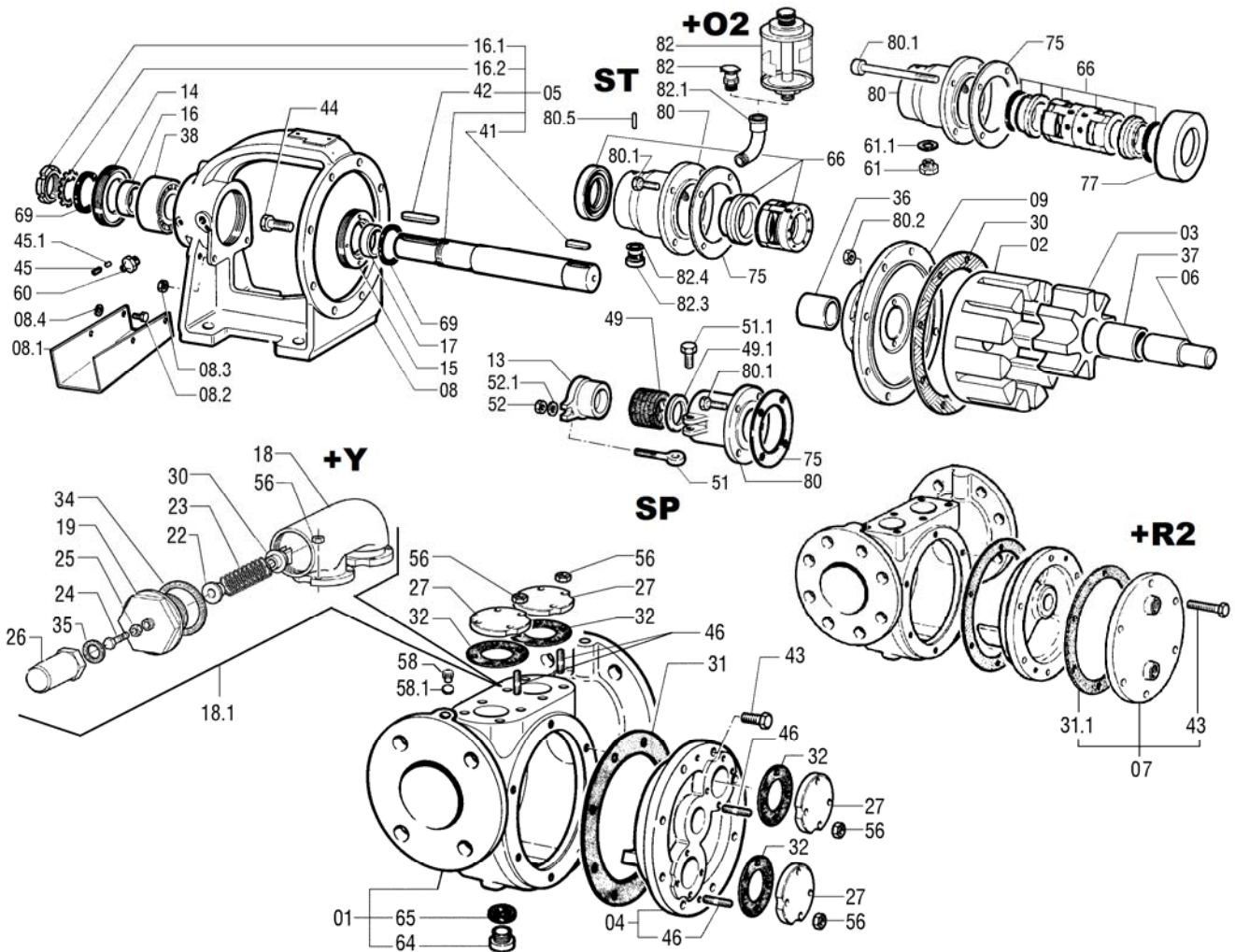
## SPARE PARTS LIST FOR "V" SERIES POSITIVE-DISPLACEMENT ROTARY PUMPS



V 80-2L SP Code 1004 2119  
V 80-2L SPG Code 1004 2118



V 80-2L ST4WG Code 1004 2120  
V 80-2L ST4BS Code 1004 2121  
V 80-2L ST4W Code 1004 5536



Rif. N°. Pos. Nr.	Quant.	Denominazione	Part name	Den. Comm. Type	Mat. *	Codice Nuovo New Part No.	V 80-2L SP	V 80-2L SPG	V 80-2L ST4W	V 80-2L ST4WG	V 80-2L ST4RS
01	1	Corpo (1)	Casing (1)		GS	1004 7984	○	○	○	○	○
02	1	Rotore	Rotor		GS	1000 6590	○	○	○	○	○
03	1	Ruota oziosa	Idler		GS	1000 6738	○	○	○	○	○
					GSH	1000 6740					○
04	1	Coperchio	Cover		G	1000 4670	○	○	○	○	○
					SH	1000 4712	③	③	③	③	③
05	1	Albero (2)	Shaft (2)	D.40	SH	1000 7619	○	○	○	○	○
					K9	1000 7629					○
06	1	Perno	Idler pin	D.40	T2	1000 5906	○	○	○	○	○
					K9	1000 5940					○
07	1	Camera di prerisc. (3)	Heating jacket (3)								
08	1	Supporto	Bearing housing		G	1000 6890	○	○	○	○	○
08.1	1	Colatoio	Drip tray		S	1000 5478	○	○			
08.2	2	Vite	Screw	M 8 x 20 DIN 933	S	1000 1937	○	○			
08.3	2	Dado	Nut	M 8 DIN 934	S	1000 1420	○	○			
08.4	2	Rondella	Washer	M 8 DIN 125 A	S	1000 1689	○	○			
09	1	Flangia supporto	Rear cover		GS	1000 5148	○	○			
					GS	1000 5153			○	○	○
13	1	Premitreccia	Gland		G	1000 6517	○	○			
14	1	Copricuscinetto	Bearing cover		G	1000 4803	○	○	○	○	○
15	1	Copricuscinetto	Bearing cover		G	1000 4804	○	○	○	○	○
16	1	Ghiera	Sleeve	35 x 45 x 15	H	1000 4252	○	○	○	○	○
16.1	1	Ghiera	Sleeve	M 35 x 1,5	S	1000 1572	○	○	○	○	○
16.2	1	Rondella	Washer	MB7 UNI 3073 D.35	S	1000 1721	○	○	○	○	○
17	1	Ghiera	Sleeve	35 x 45 x 15	H	1000 4252	○	○	○	○	○
18	1	Corpo By-pass	By-pass casing		G	1000 4458	①	①	①	①	①
18.1	1	By-pass	By-pass		G	1000 7740	①	①	①	①	①
19	1	Coperchio By-pass	By-pass cover		G	1000 4449	①	①	①	①	①
20	1	Valvola By-pass	By-pass check valve		G	1000 4467	①	①	①	①	①
21	1	Perno By-pass	By-pass idler pin		K	1000 4525	①	①	①	①	①
22	1	Piattello By-pass	By-pass plate		S	1000 4462	①	①	①	①	①
23	1	Molla By-pass	By-pass spring	D. 8 x 42 x 95 x 15,5	SHT	1000 5789	①	①	①	①	①
24	1	Vite By-pass	By-pass screw	M 10 x 60 DIN 933	H	1000 2049	①	①	①	①	①
25	1	Dado	Nut		H		①	①	①	①	①
26	1	Cappello By-pass	By-pass cap		A	1000 4439	①	①	①	①	①
27	4	Flangia By-pass	By-pass flange		G	1000 5126	○	○	○	○	○
30 (**)	1	Guarnizione corpo	Casing gasket	201 x 249 x 0,5 -8F							
31 (**)	1	Guarnizione coperchio	Cover gasket	201 x 249 x 0,5 -6F							
31.1	1	Guarnizione	Gasket	201 x 249 x 0,5 -6F							
32 (**)	4	Guarnizione	Gasket	51 x 94 x 0,5							
34	1	Guarnizione	Gasket	68 x 82 x 0,5	E3	1000 5504	①	①	①	①	①
35	1	Guarnizione	Gasket	20 x 34 x 0,5	E3	1000 5498	①	①	①	①	①
36	1	Bronzina supporto	Bearing bush	40 x 50 x 50	G	1000 4355		○		○	
					AD10	1000 4307	○		○		
					GR	1000 4272					○
37	1	Bronzina ruota oziosa	Idler bush	40 x 50 x 75	G	1000 4354		○		○	
					AD10	1000 4303	○		○		
					GR	1000 4265					○
38	1	Cuscinetto	Ball bearing	3307 HT	S	1000 1386	○	○	○	○	○
41	1	Linguetta	Key	10 x 8 x 36 DIN 6885A	S	1000 1595	○	○	○	○	○
					K	1000 1625					○
42	1	Linguetta	Key	10 x 8 x 70 DIN 6885A	S	1000 1598	○	○	○	○	○
43 (*)	6	Vite	Screw	M 12 x 30 DIN 933	S		○	○	○	○	○
				M 12 x 45 DIN 933	S		③	③	③	③	③
44 (*)	8	Vite	Screw	M 10 x 35 DIN 933	S		○	○	○	○	○
45 (*)	2	Vite	Screw	M 6 x 12 DIN913	S		○	○	○	○	○
45.1 (*)	2	Pastiglia	Shim	D. 4,8 x 3	R		○	○	○	○	○
46 (*)	16	Prigioniero	Stud	M 10 x 25 DIN 938	S		○	○	○	○	○
49	1	Baderna	Packing	40 x 60 x 10 x 5	TE	1000 7647	○	○			
49.1	1	Anello	Ring	40 x 60 x 5	K	1000 4091	○	○			
51	2	Tirante	Eyebolt	M 10 x 60 DIN 444B	H	1000 1815	○	○			
51.1	2	Vite	Screw	M 10 x 30 DIN 933	S	1000 1949	○	○			
					K	1000 2044					
52	2	Dado	Nut	M 10 DIN 934	S	1000 1421	○	○			
					K	1000 1437					

VARISCO S.p.A.

Terza Strada, 9 - Z.I. Nord - 35129 Padova - Italy

Tel. 049 82 94 111

+39 049 82 94 111

Fax 049 82 94 373

International +39 049 80 76 762



**varisco**  
solid pumping solutions

Rif. N°. Pos. Nr.	Quant.	Denominazione	Part name	Den. Comm. Type	Mat.*	Codice Nuovo New Part No.	V 80-2L SP	V 80-2L SPG	V 80-2L ST4W	V 80-2L ST4WG	V 80-2L ST4BS
52.1	2	Rondella	Washer	M 10 DIN 125A	S	1000 1691	○	○			
					K	1000 1704					
56 (*)	16	Dado	Nut	M 10 DIN 934	S		○	○	○	○	○
	8				S		③	③	③	③	③
58 (*)	2	Tappo	Plug	R 1/4" DIN 908	S		○	○	○	○	○
58.1 (**)	2	Guarnizione	Gasket	1/4"							
60 (*)	1	Ingrassatore	Grease nipple	1/4"	S		○	○	○	○	○
64 (*)	2	Tappo	Plug	R 1/2" DIN 908	S		○	○	○	○	○
65 (**)	2	Guarnizione	Gasket	1/2"							
66	1	Tenuta completa	Mechanical seal	N 40 WCT - FL		1000 8958			○	○	
	1			N 40 GCT - FL		1000 8950					○
69	2	Paraolio	Oil seal	DH 45 x 55 x 4		1000 1255	○	○	○	○	○
75 (**)	1	Guarnizione	Gasket								
80	1	Portabaderna	Stuffing box		G	1000 6157	○	○			
	1	Portatenuta	Seal box		G	1000 6179			○	○	○
80.1	4	Vite	Screw	M 8 x 30 DIN 933	S	1000 1939	○	○	○	○	○
80.2	4	Dado	Nut	M 8 DIN 934	S	1000 1420	○	○	○	○	○
80.5	1	Spina	Spring pin	3 x 20	H	1000 1785			○	○	○
82	1	Oliatore	Oil lubricator	R 1/4" KLG 4	S	1000 1671			○	○	○
				R 1/4"		1000 1672			②	②	②
82.1	1	Curva	Elbow	R 1/4"	G	1000 2292			○	○	○
82.3	3	Tappo	Plug	R 1/4" DIN 908	S	1000 2410			○	○	○
82.4	3	Guarnizione	Gasket	1/4"	E3	1000 5657			○	○	○
(*)	1	Serie viterie	Set of screw			1004 2116	○	○	○	○	○
(**)	1	Serie guarnizioni	Set of gasket			1004 2114	○	○	○	○	○

Note:	Notes:
1) Completo di tappi, guarnizioni (58, 58.1, 64, 65)	1) Complete with plugs and gaskets (58, 58.1, 64, 65)
2) Completo di linguette (41, 42), ghiera (16.1) e rondella (16.2).	2) Complete with keys (41, 42), sleeve (16.1) and washer (16.2)
3) Completo di guarnizione (31.1) e viti (43)	3) Complete with screws (43) and gasket (31.1)
① +Y Con by-pass	① +Y With by-pass
② +O2 Oliatore da 0.2 l in vetro	② +O2 With 0.2 l glass oil lubricator
③ +R2 Coperchio riscaldato	③ +R2 Heating jacket on cover
* Materiali di costruzione	* Construction materials
A = Alluminio	A = Aluminium
AD10 = Bronzo AD10	AD10 = AD10 Bronze
E3 = Centellen VS 3820	E3 = Centellen VS 3820
G = Ghisa	G = Cast iron
GR = Grafite	GR = Graphite
GS = Ghisa sferoidale	GS = Ductile cast iron
GSH = Ghisa sferoidale sulinizzata	GSH = Sulfured graphite cast iron
H = Acciaio inox AISI 304	H = AISI 304 stainless steel
K = Acciaio inox AISI 316	K = AISI 316 stainless steel
K9 = Acciaio inox AISI 329	K9 = AISI 329 stainless steel
S = Acciaio	S = Steel
SH = Acciaio trattato	SH = Hardened steel
T2 = Acciaio K110	T2 = K110 steel
Ordinare il materiale indicando sempre la quantità, la denominazione, il codice del pezzo, il tipo ed il numero della pompa.	When ordering spares always indicate type and serial number of pump, quantity, part name, and number.

VARISCO S.p.A.

Terza Strada, 9 - Z.I. Nord - 35129 Padova - Italy

Tel. 049 82 94 111

+39 049 82 94 111

Fax 049 82 94 373

International +39 049 80 76 762



**varisco**  
solid pumping solutions

**VARISCO S.p.A.**

Terza Strada, 9 - Z.I. Nord - 35129 Padova - Italy

Tel. 049 82 94 111 +39 049 82 94 111

Fax 049 82 94 373 International +39 049 80 76 762



**varisco**<sup>®</sup>  
solid pumping solutions