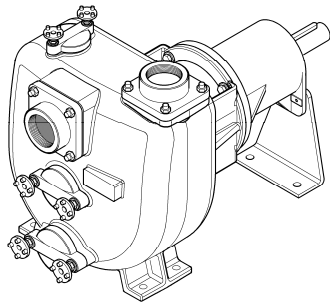
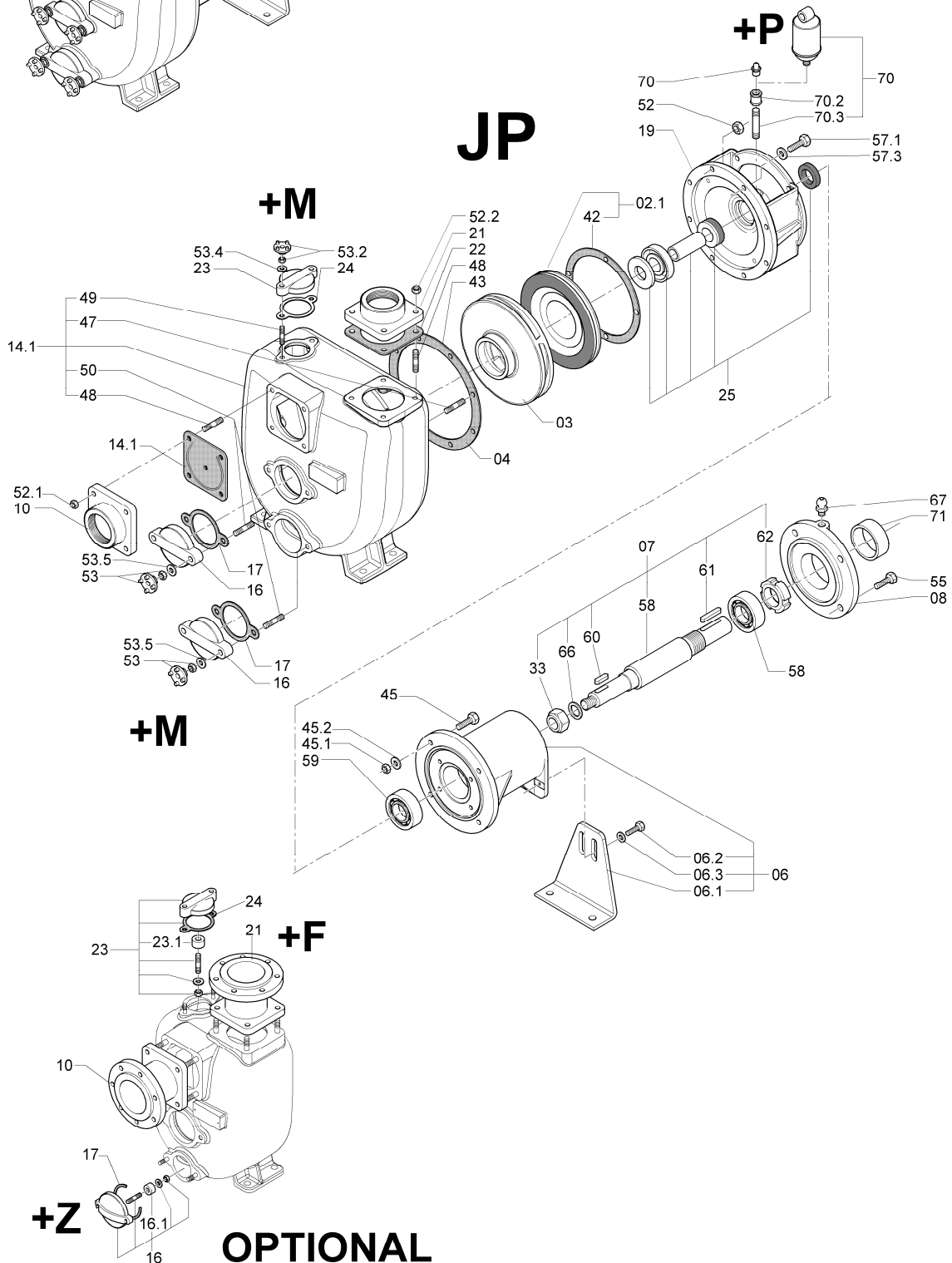


**DISTINTA DELLE PARTI COSTITUENTI LE POMPE CENTRIFUGHE AUTOADESCANTI SERIE " J "**  
**SPARE PARTS LIST FOR "J" SERIES SELF-PRIMING PUMPS**  
**LISTE DES PIECES DE RECHANGE POUR POMPES CENTRIFUGES AUTO-AMORCANTES SERIE "J "**  
**ERSATZTEILLISTE FÜR SELBSTANSAUGENDE KREISELPUMPEN SERIE "J "**



JS 3-240 G10	cod. 1004 2648
JS 3-240 F10	cod. 1004 7442
JS 3-240 Q10	cod. 1004 7443
JS 3-240 P10	cod. 1004 7444
JS 3-240 P30	cod. 1004 7445



Rif. N° Pos. Nr.	Quant.	Denominazione	Part name	Den. Comm. Type	Mat. *	Codice Nuovo New Part. No.	JS 3-240 G10	JS 3-240 F10	JS 3-240 Q10	JS 3-240 P10	JS 3-240 P30
01	1	Corpo (1)	Casing (1)		GS	1004 7012	○			○	○
					GS	1004 8845		○	○		
02.1	1	Piatto d' usura (2)	Wear plate (2)		GN	1002 3925	○				
					G	1002 3926				○	○
					K	1002 3928		○			
					B	1002 3927			○		
03	1	Girante	Impeller		GS	1004 2642	○			○	○
					K	1004 7219		○			
					B	1004 7218			○		
06	1	Supporto	Bearing housing		G	1002 1227	○	○	○	○	○
06.1	2	Piede supporto	Bearing housing foot		S	1002 1223	○	○	○	○	○
06.2	2	Vite	Screw	M 14 x 30 DIN 933	S	1002 8305	○	○	○	○	○
06.3	2	Rondella	Washer	M 14 UNI751/52	S	1000 1682	○	○	○	○	○
07	1	Albero (3)	Shaft (3)		S3	1002 1225	○			○	○
					K5	1002 1264		○	○		
08	1	Copricuscinetto	Bearing cover		G	1000 4775	○	○	○	○	○
10	1	Portavalvola	Suction flange	R 3"	G	1000 6422	○	○		○	○
					OTS	1000 6399			○		
							+F	+F	+F	+F	+F
14.1	1	Valvola completa	Check valve ass.		NK	1000 9019	○				
					VK	1000 9022		○	○	○	○
16	2	Portina	Cover		G	1000 6474	○	○	○	○	○
					SZ	1000 8503	+Z	+Z	○	+Z	+Z
16.1	2	Placca zinco	Zinc anode		Z	1000 3810	+Z	+Z	○	+Z	+Z
17 (**)	2	Guarnizione	Gasket								
19	1	Portamotore	Head		G	1002 1216	○	○	○	○	○
21	1	Flangia mandata	Discharge flange	R 3"	G	1000 5090	○	○		○	○
					OTS	1000 5070			○		
							+F	+F	+F	+F	+F
22 (**)	1	Guarnizione	Gasket								
23	1	Portina	Cover		S	1000 6473	○	○	○	○	○
					SZ	1000 8502	+Z	+Z	○	+Z	+Z
23.1	1	Placca zinco	Zinc anode				+Z	+Z	○	+Z	+Z
24 (**)	1	Guarnizione	Gasket								
25	1	Anello di tenuta	Mechanical seal ass.	T 45 YYN		1002 1228	○				
						1002 1309		○	○	○	
						1002 3973				○	
33	1	Dado girante	Impeller nut	M 30 x 2 UNI 7474	H	1000 1466	○			○	○
					K	1000 1473		○	○		
42 (**)	1	Guarnizione piatto	Wear plate gasket								
43 (**)	1	Guarnizione corpo	Casing gasket								
45	4	Vite	Screw	M 12 x 45 DIN 933	S	1000 1961	○			○	○
					K	1000 2056		○	○		
45.1	4	Dado	Nut	M 12 DIN 934	S	1000 1422	○			○	○
					K	1000 1439		○	○		
45.2	4	Rondella	Washer	M 12 UNI1751/52	S	1000 1681	○			○	○
					K	1000 1685		○	○		
47 (*)	8	Prigioniero	Stud	M 12 x 30 DIN 938	S		○			○	○
					K			○	○		
48 (*)	8	Prigioniero	Stud	M 10 x 25 DIN 938	S		○			○	○
					K			○	○		
49 (*)	2	Prigioniero	Stud	M 10 x 30 DIN 938	S		○			○	○
					K			○	○		

VARISCO S.p.A.

Terza Strada, 9 - Z.I. Nord - 35129 Padova - Italy

Tel. 049 82 94 111

+39 049 82 94 111

Fax 049 82 94 373

International +39 049 80 76 762



Rif. N° Pos. Nr.	Quant.	Denominazione	Part name	Den. Comm. Type	Mat. *	Codice Nuovo New Part. No.	JS 3-240 G10	JS 3-240 F10	JS 3-240 Q10	JS 3-240 P10	JS 3-240 P30
50	4	Prigioniero	Stud	M 10 x 30 DIN 938	S		○			○	○
					K			○	○		
52 (*)	8	Dado	Nut	M 12 DIN 934	S		○			○	○
					K			○	○		
52.1(*)	4	Dado	Nut	M 10 DIN 934	S		○			○	○
					K			○	○		
52.2(*)	4	Dado	Nut	M 10 DIN 934	S		○			○	○
					K			○	○		
53 (*)	4	Dado	Nut	M 10 DIN 934	S		○			○	○
					K			○	○		
		Maniglietta	Wrench	M 10	OTS	1000 5771	+M	+M	○	+M	+M
53.2 (*)	2	Dado	Nut	M 10 DIN 934	S		○			○	○
					K			○	○		
		Maniglietta	Wrench	M 10	OTS	1000 5771	+M	+M	○	+M	+M
53.4(*)	2	Rondella	Washer	M 10 DIN 125 A	S		○			○	○
					H			○			
53.5(*)	4	Rondella	Washer	M 10 DIN 125 A	S		○			○	○
					H			○			
55	2	Vite	Screw	M 6x25 DIN 933	S	1002 8349	○			○	○
					K	1000 2023		○	○		
57.1(*)	4	Vite	Screw	M 12 x 25 DIN 933	S		○			○	○
					H			○	○		
57.3(*)	4	Rondella	Washer	M 12 UNI1751/52 A	S		○			○	○
					H			○	○		
58	1	Cuscinetto	Ball bearing	3308		1004 0861	○	○	○	○	○
59	1	Cuscinetto	Ball bearing	62208-2RS		1000 1365	○	○	○	○	○
60	1	Linguetta	Key	10 x 8 x 40 DIN 6885A	K	1000 1626	○	○	○	○	○
61	1	Linguetta	Key	10 x 8 x 70 DIN 6885A	S	1000 1598	○	○	○	○	○
62	1	Ghiera	Sleeve	M 40	S	1000 1573	○	○	○	○	○
66	1	Rondella	Washer	M 30 DIN 125 A	H	1000 1716	○	○	○	○	○
					K	1000 1715		○	○		
70	1	Ingrassatore	Grease nipple	R 1/4"		1000 1662	○	○	○	○	○
						1000 8316	+P	+P	+P	+P	+P
70.2	1	Manicotto	Union	R 1/4" M/F	S		+P	+P	+P	+P	+P
70.3	1	Prolunga	Grease tube	1/4"	S		+P	+P	+P	+P	+P
71	1	V-ring	V-ring	V 35		1000 1294	○	○	○	○	○
(*)		Serie viterie	Set of screw			1004 2644	○			○	○
						1004 7767			○		
						1004 7771		○			
(**)		Serie guarnizioni	Set of gaskets			1004 2645	○			○	○
						1004 7768			○		
						1004 7772		○			
+F ***		Kit flange	Kit flange	DN 80 PN 16	G	1004 2810	○	○		○	○
				DN 80 PN 16	B	1004 2788			○		
				3" ASA150	G	1004 2819	○	○		○	○
				3" ASA150	B	1004 2823			○		
				3" ASA150	K	1004 2827		○			
+P ***		Kit ingrassatore	Compl. Grease kit			1000 8316	○	○	○	○	○
+Z ***		Kit portine	Set of couver		GZ	1004 7393	○		○	○	○
+M ***		Kit manigliette	Set of wrench		OTS	1004 2794	○	○	○	○	○
***		Optional									

<b>Note:</b>		<b>Notes:</b>	
1) Completo di prigionieri (47, 48, 49, 50).		1) Complete with studs (47, 48, 49,50).	
2) Completo di guarnizione (42).		2) Complete with gasket (42).	
3) Completo di dado, rondella e linguette (33, 60, 61, 66)		3) Complete with nut, washer and keys (33, 60, 61, 66)	
* Materiali di costruzione		* Construction materials	
E3	= Centellen VS 3820	E3	= Centellen VS 3820
G	= Ghisa	G	= Cast iron
GS	= Ghisa sferoidale	GS	= Ductile cast iron
H	= Acciaio inox AISI 304	H	= AISI 304 stainless steel
K	= Acciaio inox AISI 316	K	= AISI 316 stainless steel
K5	= Acciaio inox SAF2205	K5	= SAF2205 stainless steel
N	= Nitrile	N	= Nitrile rubber
OTS	= Ottone	OTS	= Brass
S	= Acciaio	S	= Steel
S3	= Acciaio 38NiCrMo4	S3	= Steel 38NiCrMo4
V	= Viton	V	= Viton
Z	= Zinco	Z	= Zinc
Ordinare il materiale indicando sempre la quantità, la denominazione, il codice del pezzo, il tipo e il numero della pompa.		When ordering spares always indicate: quantity, part name and part number, type and serial number of pump.	