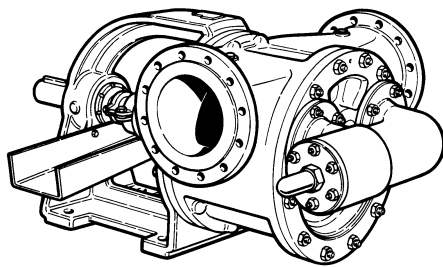
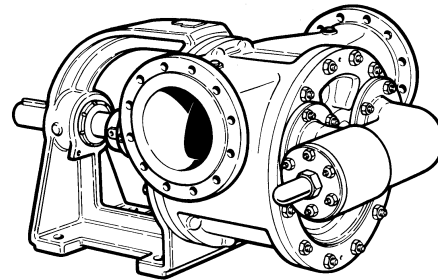


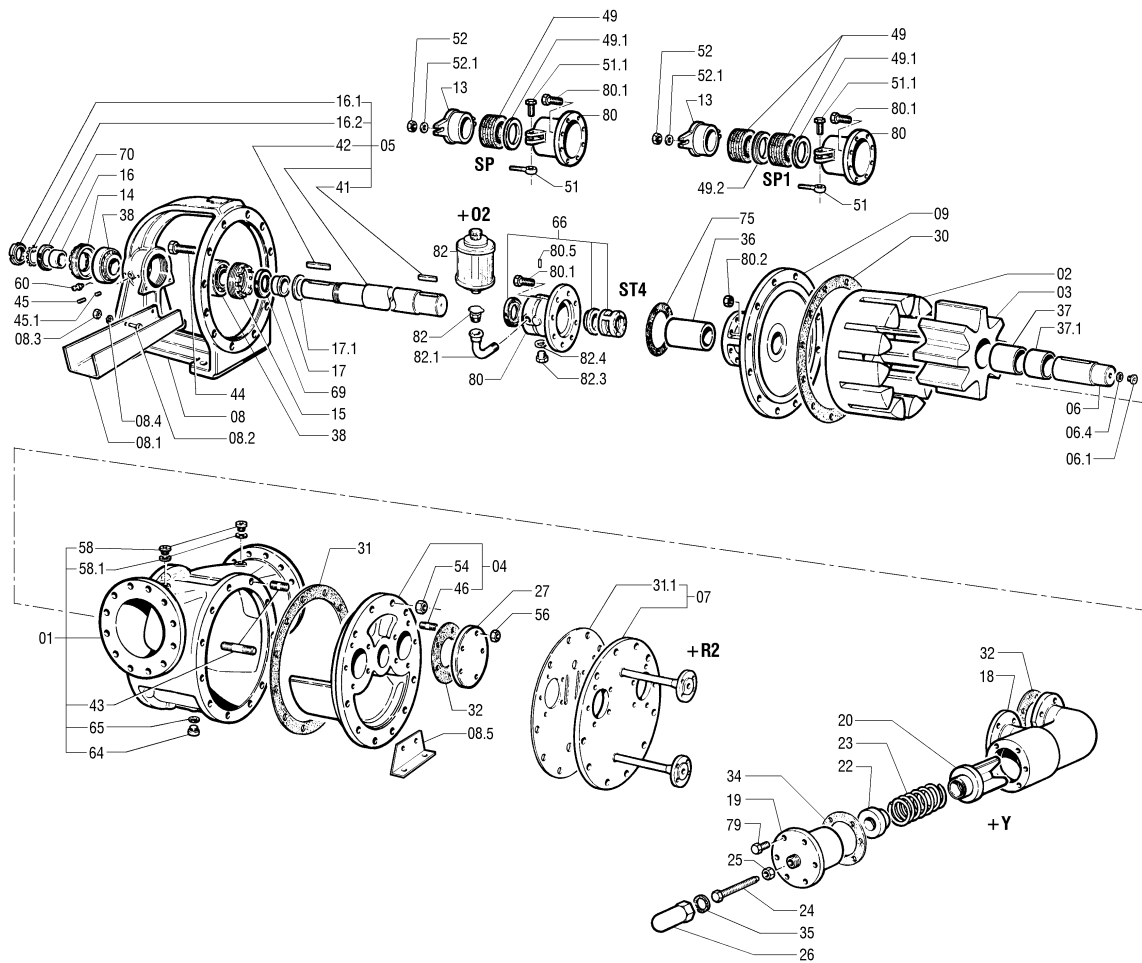
DISTINTA DELLE PARTI COSTITUENTI LE POMPE ROTATIVE VOLUMETRICHE SERIE "V"
SPARE PARTS LIST FOR "V" SERIES POSITIVE-DISPLACEMENT ROTARY PUMPS
LISTE DES PIÈCES DE RECHANGE POUR POMPES ROTATIVES VOLUMÉTRIQUES SERIE "V"
ERSATZTEILLISTE FÜR SELBSTANSAUGENDE INNENZAHNRADPUMPEN SERIE "V"



V180 SP Code 6743 1002
 V180 SP1 Code 6742 1003
 V180 SPK Code 6745 5001



V180 ST4W Code 6743 1004
 V180 ST4K Code 6745 5000



Rif. N°. Pos. Nr. Ref. no. Réf. N°.	Quant.	Denominazione	Part name	Den. Comm. Type	Mat.*	Codice Vecchio Old Part No.	Codice Nuovo New Part No.	V180 SP	V180 SP1	V180 ST4W	V180 SPK	V180 ST4K
01	1	Corpo (1)	Casing (1)		GS	5319 3108		○	○	○		
					K	5319 5069					○	○
02	1	Rotore	Rotor		GS	3765 3041	10006613	○	○	○		
					K	3765 5027	10006697					○
03	1	Ruota oziosa	Idler		GS	3780 3060	10006777	○	○	○		
					K	3780 5027	10006843					
04	1	Coperchio (2)	Cover (2)		GS	5270 3041		○	○	○		
					K	5270 5033						
05	1	Albero (3)	Shaft (3)	D. 90	SH	5032 4027	10007624	○	○	○		
					K9	5032 5049	10007637					
06	1	Perno	Idler pin	D. 90	T	3540 4065	10005926	○	○	○		
					K5	3540 5069	10005952					
06.1	1	Tappo	Plug	R ¼" DIN 908	S	1671 4002	10002410	○	○	○		
					K	1671 5002	10002414					
06.4	1	Guarnizione	Gasket		D	3450 0600	10005657	○	○	○	○	○
07	1	Camera di preriscald. (4)	Heating jacket (4)		F	5135 4008		①	①	①	①	①
08	1	Supporto	Bearing housing		GS	3872 3030	10006897	○	○	○	○	○
08.1	1	Colatoio	Drip tray		S	3435 4005	10005481	○	○			
					K	3435 5005	10005486					
08.2	2	Vite	Screw	M 8 x 25 DIN 933	S	1478 4011	10001938	○	○			
					K	1478 5011	10002030					
08.3	2	Dado	Nut	M 8 DIN 934	S	1420 4004	10001420	○	○			
					K	1420 5004	10001435					
08.4	2	Rondella	Washer	M 8 DIN 125 A	S	1450 4003	10001689	○	○			
					K	1450 5016	10001718					
08.5	1	Piede	Base		F	3860 7000	10006859	○	○	○	○	○
09	1	Flangia supporto	Rear cover		GS	3375 4002	10005169	○	○	○		
					K	5375 5022	10008106					
13	1	Premitreccia	Gland		G	3690 3011	10006521	○	○			
					K	3690 5009	10006528					
14	1	Copricuscinetto	Bearing cover		G	3287 3026	10004812	○	○	○	○	○
15	1	Copricuscinetto	Bearing cover		G	3287 3026	10004812	○	○	○	○	○
16	1	Ghiera	Sleeve	70 x 80 x 31	F	3107 4506	10004242	○	○	○	○	○
16.1	1	Ghiera	Sleeve	M 70 x 2 KM14		1430 4010	10001579	○	○	○	○	○
16.2	1	Rondella	Washer	D. 70 UNI 3073	S	1452 4004	10001723	○	○	○	○	○
17	1	Ghiera	Sleeve	70 x 80 x 37	F	3107 4511	10004247	○	○	○	○	○
17.1	1	Anello spartiacque	Water deflector		K	3045 5080	10004116	○	○	○	○	○
18	1	Corpo By-pass	By-pass casing		G	3240 4010	10004484	②	②	②		
					KTI	3240 5095						
19	1	Coperchio By-pass	By-pass cover		G	3240 4011	10004485	②	②	②		
					KTI	3240 5094	10004552					
20	1	Valvola By-pass	By-pass check valve		S	3240 4012	10004486	②	②	②		
					KTI	3240 5097	10004554					
22	1	Piatello By-pass	By-pass plate		G	3240 3040	10004473	②	②	②		
					K	3240 5096	10004553					
23	1	Molla By-pass	By-pass spring	D. 16 x 90 x 350	S	3495 4029	10005793	②	②	②	②	②
24	1	Vite By-pass	By-pass screw	M 12 x 50 DIN 914	S	3240 5092	10004549	②	②	②	②	②
25	1	Dado	Nut		K	3240 5093	10004551	②	②	②	②	②
26	1	Cappello By-pass	By-pass cap		S	3240 4020	10004492	②	②	②		
					K	3240 5091	10004548					
27	2	Flangia By-pass	By-pass flange		F	3362 4007	10005135	○	○	○		
					K	3362 5004	10005140					
30	1	Guarnizione corpo	Casing gasket	451 x 549 x 0,5	E3	3450 0115	10005533	○	○	○	○	○
31	1	Guarnizione coperchio	Cover gasket	451 x 549 x 0,5	E3	3450 0114	10005532	○	○	○	○	○
31.1	1	Guarnizione	Gasket		E3	3450 0057	10005518	①	①	①	①	①
32	2	Guarnizione flangia	Flange gasket	111 x 219 x 0,5	E3	3450 0027	10005510	○	○	○	○	○
34	1	Guarnizione coperchio	Cover gasket		E3	3450 0034	10005515	②	②	②	②	②
35	1	Guarnizione cappello	Cap gasket		E3	3450 0016	10005501	②	②	②	②	②

VARISCO S.p.A.

Terza Strada, 9 - Z.I. Nord - 35129 Padova - Italy

Tel. 049 82 94 111

+39 049 82 94 111

Fax 049 82 94 373

International +39 049 80 76 762



Rif. N°. Pos. Nr. Ref. no. Réf. N°.	Quant.	Denominazione	Part name	Den. Comm. Type	Mat.*	Codice Vecchio Old Part No.	Codice Nuovo New Part No.	V180 SP	V180 SP1	V180 ST4W	V180 SPK	V180 ST4K
36	1	Bronzina supporto	Bearing bush	90 x 110 x 150	AD10	3120 2079	10004328	○	○	○		
				90 x 110 x 150	GR	3120 0046	10004285				○	○
37	1	Bronzina ruota oziosa	Idler bush	90 x 110 x 150	AD10	3120 2085	10004331	○	○	○		
				90 x 110 x 100	GR	3120 0020	10004269				○	○
37.1	1	Bronzina ruota oziosa	Idler bush	90 x 110 x 48	GR	3120 0057	10004291				○	○
38	2	Cuscinetto	Ball bearing	32214 A	S	1418 0023	10001344	○	○	○	○	○
41	1	Linguetta	Key	20 x 12 x 90 DIN 6585A	K	1434 5017	10001632	○	○	○	○	○
42	1	Linguetta	Key	18 x 11 x 120 DIN6585A	S	1434 4026	10001604	○	○	○	○	○
43	10	Prigioniero	Stud	M 20 x 50 DIN 938	S	1468 4019	10001833	○	○	○		
	10				K	1468 5012	10001853				○	○
	2			M 16 x 60 DIN 938	K	1468 5010	10001851	○	○	○	○	○
	10			M 20 x 90	S	3975 4011	10006912	⊕	⊕	⊕		
	10				K	3975 5044	10006940				⊕	⊕
	2			M 16 x 100	S	3975 4009		⊕	⊕	⊕		
	2			M 16 x 105	K	3975 5045					⊕	⊕
44	12	Vite	Screw	M 20 x 80 DIN 938	S	1478 4067	10001984	○	○	○		
				M 20 x 80 DIN 938	K	1478 5062	10002066				○	○
45	2	Vite	Screw	M 8 x 20 DIN 913	S	1470 4005	10001865	○	○	○	○	○
45.1	2	Pastiglia	Shim	D. 6 x 5		3885 2002	10006901	○	○	○	○	○
46	8	Prigioniero	Stud	M 16 x 40 DIN 938	S	1468 4017	10001831	○	○	○		
					K	1468 5008	10001850				○	○
49	5	Anelli baderna	Packing rings	80 x 105 x 12,5	TE	1003 0042	10000016	○			○	
	6				TE	1003 0042	10000016		○			
49.1	1	Anello	Ring		K	3045 5038	10004101	○	○		○	
49.2	1	Anello	Ring		K	3045 5027	10004099		○			
51	2	Tirante	Eyebolt	M 12 x 70 DIN 444B	H	1466 5003	10001816	○	○		○	
51.1	2	Vite	Screw	M 12 x 35 DIN 933	S	1478 4040	10001961	○	○			
					K	1478 5063	10002067				○	
52	2	Dado	Nut	M 12 DIN 934	S	1420 4006	10001422	○	○			
					K	1420 5008	10001439				○	
52.1	2	Rondella	Washer	M 12 DIN 125 A	S	1450 4016	10001699	○	○			
					K	1450 5003	10001706				○	
54	10	Dado	Nut	M 20 DIN 934	S	1420 4010	10001426	○	○	○		
					K	1420 5013	10001444				○	○
56	10	Dado	Nut	M 16 DIN 934	S	1420 4009	10001425	○	○	○		
					K	1420 5011	10001442				○	○
58	2	Tappo	Plug	R 1/4" DIN 908	S	1671 4002	10002410	○	○	○		
					K	1671 5002	10002414				○	○
58.1	2	Guarnizione	Gasket	1/4"	D	3450 0600	10005657	○	○	○	○	○
60	1	Ingrassatore	Grease nipple	1/4"	S	1444 0007	10001662	○	○	○	○	○
64	1	Tappo	Plug	R 1" DIN 908	S	1671 4006	10002412	○	○	○		
					K	1671 5006	10002416				○	○
65	1	Guarnizione	Gasket	32,5 x 42 x 2	E3	3450 0605	10005661	○	○		○	
				33 x 39 x 2	E3	3450 0607	10005662			○		○
66	1	Tenuta completa	Mechanical seal	N80 GYT - US3A -FL		5919 4082	10008978			○		○
69	1	Paraolio	Oil seal	V 80 S		1408 6011	10001300	○	○	○	○	○
70	1	Paraolio	Oil seal	V 80 S		1408 6011	10001300	○	○	○	○	○
75	1	Guarnizione	Gasket	146 x 189 x 0,5	E3	3450 0354	10005619	○	○	○	○	○
79	6	Vite	Screw	M 12 x 35 DIN 933	S	1478 4040	10001961	⊗	⊗	⊗		
					K	1478 5063	10002067				⊗	⊗
80	1	Portabaderna	Stuffing box		G	3615 3015	10006164	○				
					G	3615 3030	10006169		○			
					K	3615 5010	10006207				○	
	1	Portatenuta	Seal box		G	3615 3350	10006193			○		
				K	3615 5316	10006225					○	
81.1	8	Vite	Screw	M 8 x 40 DIN 931	S	1478 4014	10001941	○	○	○		
					K	1478 5016	10002035				○	○

VARISCO S.p.A.

Terza Strada, 9 - Z.I. Nord - 35129 Padova - Italy

Tel. 049 82 94 111

+39 049 82 94 111

Fax 049 82 94 373

International +39 049 80 76 762



Rif. N°. Pos. Nr. Ref. no. Réf. N°.	Quant.	Denominazione	Part name	Den. Comm. Type	Mat.*	Codice Vecchio Old Part No.	Codice Nuovo New Part No.	V180 SP	V180 SP1	V180 ST4W	V180 SPK	V180 ST4K
80.2	8	Dado	Nut	M 8 DIN 934	S	1420 4004	10001420	○	○	○		
					K	1420 5004	10001435				○	○
80.5	1	Spina	Spring pin	4 x 20	H	1463 5007	10001784			○		○
82	1	Oliatore	Oil lubricator	R 1/4" KLG 4	S	1444 0053	10001671			○		○
				140 ml		1444 0055	10001672			③		③
82.1	1	Curva	Elbow	R 1/4"	G	1601 3002	10002292			○		○
82.3	1	Tappo	Plug	R 1/4" DIN 908	S	1671 4002	10002410			○		
					K	1671 5002	10002414					○
82.4	1	Guarnizione	Gasket		D	3450 0600	10005657			○		○
(*)		Serie viterie	Set of screws									
(**)		Serie guarnizioni	Set of gaskets			5797 0016	10008711	○	○	○	○	○

Note:

- 1) Completo di tappi (58, 64) e guarnizioni (58.1, 65)
- 2) Completo di prigionieri (46)
- 3) Completo di ghiera (16.1), rondella (16.2) e linguette (41, 42)
- 4) Completo di guarnizione (31.1)
- 5) Completo di bronzina (36)

- ① +R2 Con camera di preriscaldamento sul coperchio
 ② +Y Con by-pass
 ③ +02 Con oliatore da 140 ml in vetro

* Materiali di costruzione

AD10 = Bronzo AD10
 D = Guarnital o fibra
 E3 = Centellen VS 3820
 G = Ghisa
 GR = Grafite
 GS = Ghisa sferoidale
 H = Acciaio inox AISI 304
 K = Acciaio inox AISI 316
 K5 = Acciaio inox SAF 2205
 K9 = Acciaio inox AISI 329
 KTI = Acciaio inox AISI 316 al Titanio
 S = Acciaio
 SH = Acciaio trattato
 T = Acciaio cementato
 TE = Teflon

Ordinare il materiale indicando sempre la quantità, la denominazione, il codice del pezzo, il tipo ed il numero della pompa.

Notes:

- 1) Complete with plugs (58, 64) and gaskets (58.1, 65)
- 2) Complete with studs (46)
- 3) Complete with sleeve (16.1), washer (16.2) and keys (41, 42)
- 4) Complete with gasket (31.1)
- 5) Complete with bush (36)

- ① +R2 Heating jacket on cover
 ② +Y With by-pass
 ③ +02 With 140 ml glass oil lubricator

* Construction materials

AD10 = AD10 Bronze
 D = Guarnital or fiber
 E3 = Centellen VS 3820
 G = Cast iron
 GR = Graphite
 GS = Ductile cast iron
 H = AISI 304 stainless steel
 K = AISI 316 stainless steel
 K5 = SAF 2205 stainless steel
 K9 = AISI 329 stainless steel
 KTI = AISI 329 stainless steel + Titanium
 S = Steel
 SH = Hardened steel
 T = Case hardened steel
 TE = Teflon

When ordering spares always indicate type and serial number of pump, quantity, part name, and number.

VARISCO S.p.A.

Terza Strada, 9 - Z.I. Nord - 35129 Padova - Italy
 Tel. 049 82 94 111 +39 049 82 94 111
 Fax 049 82 94 373 International +39 049 80 76 762

 **varisco**
 solid pumping solutions