



Atlas Copco

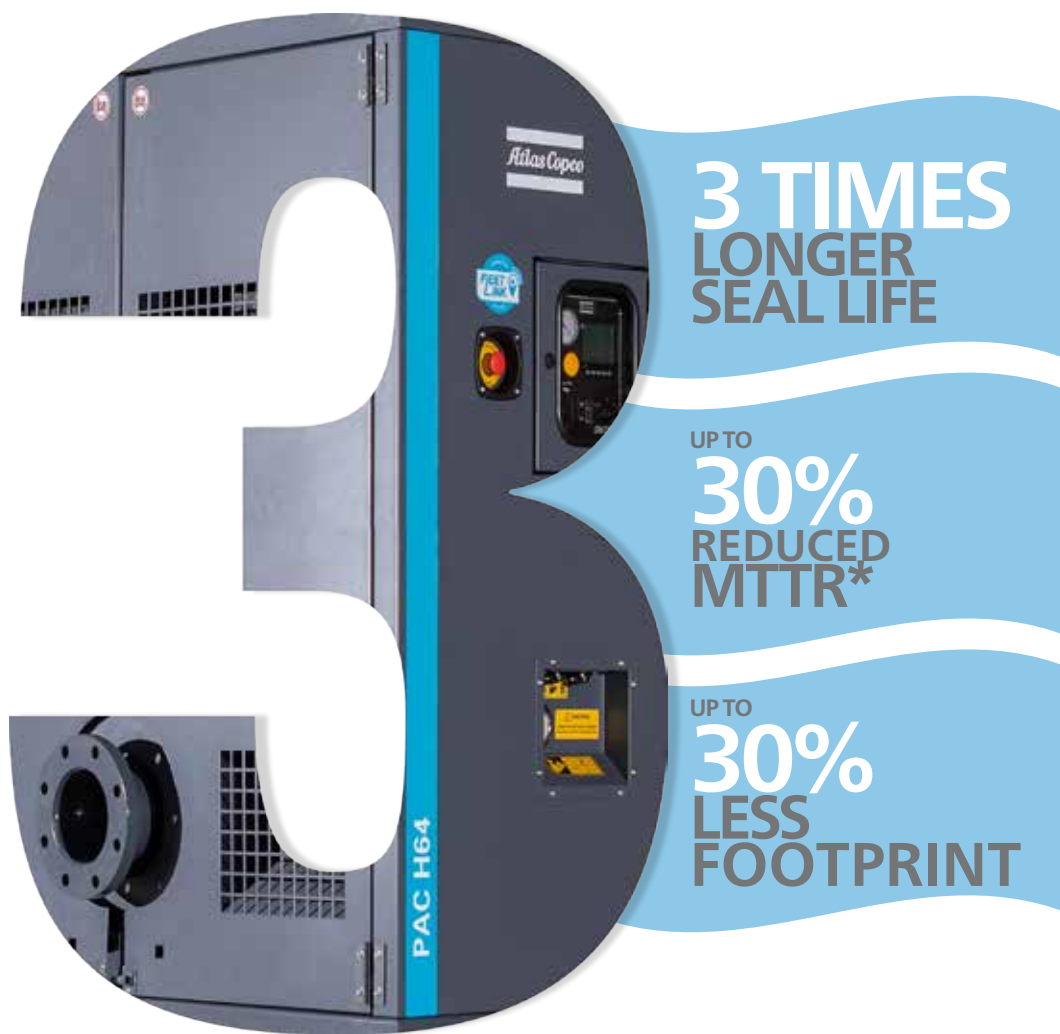


Head series,
rising to new
heights in the flow

PAC H range

Head series, rising to new heights in the flow

The new PAC H pumps for high-pressure applications, have been designed to reduce downtime and prolong lifespan, saving operational costs. Part of Atlas Copco's Head series, the PAC H is a centrifugal pump that can handle liquids containing solids of up to 89mm in size. This makes it particularly well suited to industrial applications, such as water transfer in the oil and gas sector, quarrying and surface mining, construction, and municipal applications.



* Mean time to repair

↑ MAX. HEAD
UP TO
150 m

MAX. FLOW
UP TO **1200 m³/h**

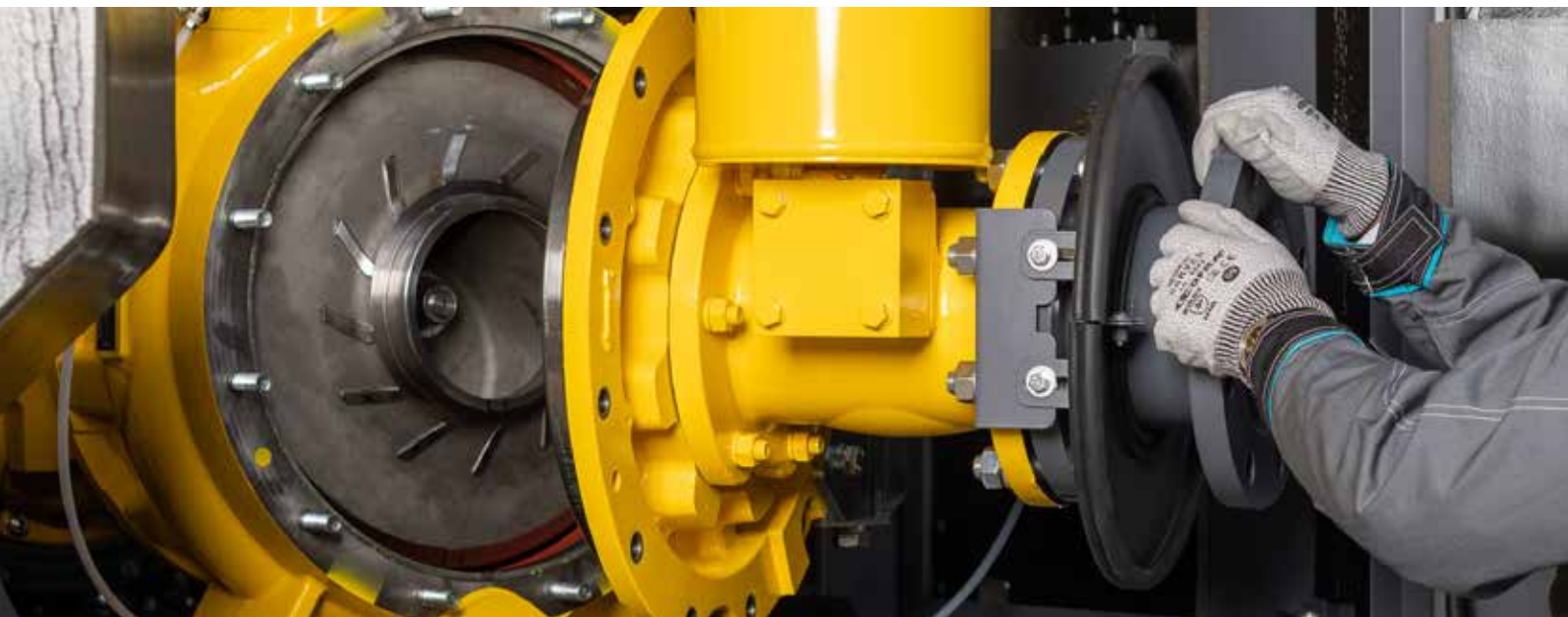
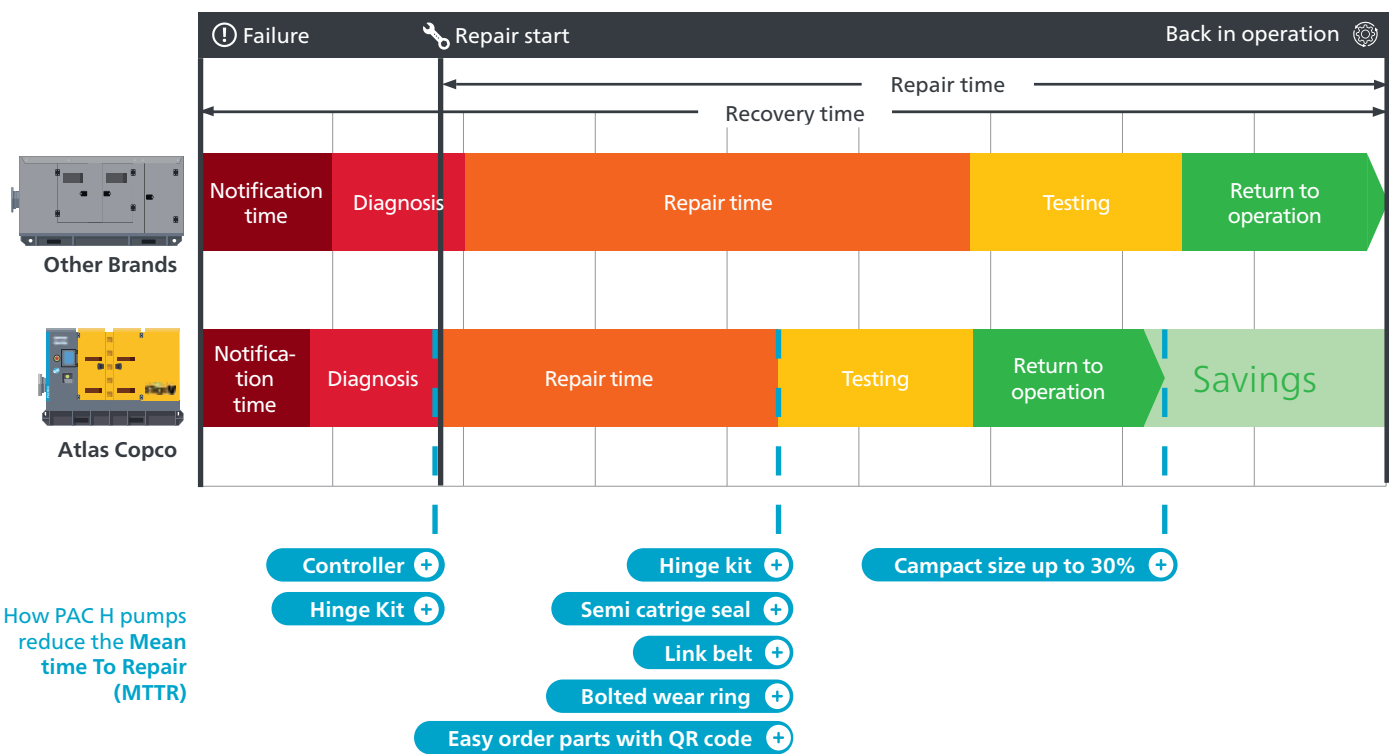
UP TO **89 mm**
SOLIDS
HANDLING

Stop losing money by reducing the mean time to repair (MTTR)

The innovative Atlas Copco **hinge kit** minimises downtime and makes maintenance easier, thanks to a swing door that allows quick and easy access to the pump's internal workings, and a **single bolt** to remove the impeller. The **semi-cartridge seal** enables change-out without dismantling the pump, and makes the lip seal and impeller easily accessible. **Bolted wear rings** make for precise and simple replacement compared to pressed alternatives, and **link belts** are used to enable changeovers without having to dismantle the entire wet end of the unit, **reducing mean time to repair by up to 30%.**



Up to 30% reduced mean time to repair



PAC H range

THE LEAN AND GREEN PUMP

The PAC H pump range is fully EU emission compliant and features a 120% fully leak-free structure, making it a clean and green machine. Offering available for worldwide emission norms and certifications

stAgeV

KEEP YOUR SEAL PROTECTED

The exclusive closed impeller is equipped with deflector vanes that keep the mechanical seal clean and free of detritus. This unique hydraulic design helps the mechanical seal last three times longer

**3 TIMES
LONGER
SEAL LIFE**

HIGH PERFORMANCE AND ROBUSTNESS

The PAC H pumps can reach up to 150 metres in head, with a capacity of up to 1200m³/h and can handle high solids of up to 89mm.



SAVE SERVICING COST AND TIME

The PAC H series pump helps customers reduce mean time to repair (MTTR) by up to 30%. Features like the Atlas Copco hinge Kit, semi-cartridge seal design, bolted wear plate and link belts mean that the wear components can be serviced and replaced without dismantling the pump.

HINGE DOOR
003 min
CLEAN-UP
AND RESTART



STAY IN CONTROL

The PW controller series enables the users to get the most out of the pumps in any application. There is automatic operation via transducer and floats and complete engine management with alarms and fault shutdown. FleetLink connectivity means the customer is always in control of the fleet.



ERGONOMIC LIGHTING

The PAC H comes with internal lighting to facilitate visibility during maintenance or repair.

COMPACT DESIGN

The compact PAC H range offers dimensions up to 30% smaller than pumps working on similar applications, meaning that 10 units can be loaded on a 13-metre truck.

SCAN AND ORDER

PAC H pumps take advantage of digital technology, featuring QR codes that mean essential information about parts and spares is just a scan away.



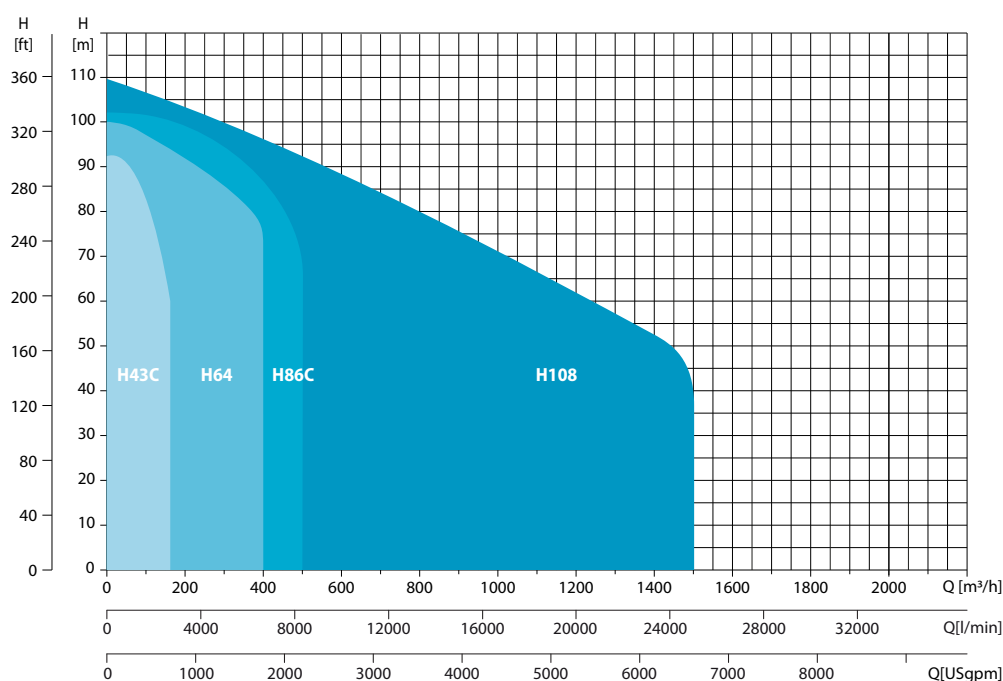
UP TO
30% LESS
FOOTPRINT

PAC H (EU Emission Compliant)

Technical data

| Specifications | | PAC H43C | PAC H64 | PAC H86C | PAC H108 |
|-----------------------|-------------------|----------|---------|----------|----------|
| Max. head | m | 92 | 101 | 102 | 109 |
| Max. capacity | m ³ /h | 160 | 400 | 540 | 1300 |
| Suction | mm (in) | 100 (4) | 150 (6) | 200 (8) | 250 (10) |
| Discharge size | mm (in) | 75 (3) | 100 (4) | 150 (6) | 200 (8) |
| Max. solids handling | mm | 20 | 76 | 76 | 89 |
| Best efficiency point | % | 62 | 70 | 77 | 70 |
| Engine | | | | | |
| Emission compliance | | Stage V | Stage V | Stage IV | Stage V |
| Max. engine power | kW | 55 | 129 | 210 | 286 |
| Max. operating speed | rpm | 2600 | 1700 | 1800 | 1800 |
| Max. fuel autonomy | h | 30 | 24 | 14 | 14 |
| Weight and dimensions | | | | | |
| Weight (dry) | kg | 1600 | 2500 | 3500 | 4500 |
| Length | mm | 2500 | 3100 | 3850 | 3300 |
| Width | mm | 1100 | 1600 | 2020 | 1650 |
| Height | mm | 1700 | 2000 | 2000 | 2300 |

Operation area

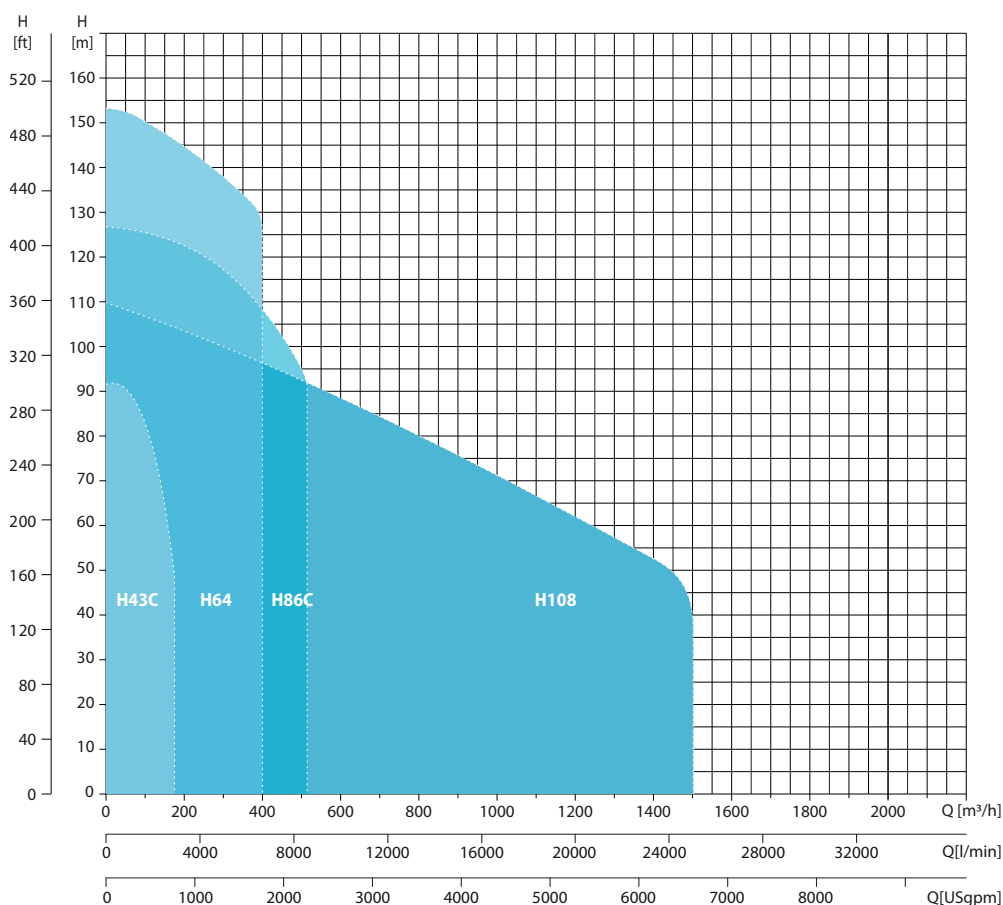


PAC H (LRC emission complaint)

Technical data

| Specifications | | PAC H43C | PAC H64 | PAC H86C | PAC H108 |
|-----------------------|-------------------|-----------------|-----------------|-----------------|-----------------|
| Max. head | m | 92 85 | 101 150 | 102 120 | 109 |
| Max. capacity | m ³ /h | 160 | 400 | 540 | 1300 |
| Suction | mm (in) | 100 (4) | 150(6) | 200 (8) | 250 (10) |
| Discharge size | mm (in) | 75 (3) | 100 (4) | 150 (6) | 200 (8) |
| Max. solids handling | mm | 20 | 76 | 76 | 89 |
| Best efficiency point | % | 62 | 70 | 77 | 82 |
| Engine | | | | | |
| Emission compliance | | Tier 3 Tier 2 | Tier 3 Tier 2 | Tier 3 Tier 2 | Tier 3 Tier 2 |
| Max. engine power | kW | 55 | 160 276 | 210 276 | 286 276 |
| Max. operating speed | rpm | 2600 2500 | 1700 2100 | 1800 2000 | 1800 |
| Max. fuel autonomy | h | 30 | 24 | 14 | 14 |
| Weight and dimensions | | | | | |
| Weight (dry) | kg | 1600 | 2500 | 3500 | 4500 |
| Length | mm | 2500 | 3100 | 3300 | 3300 |
| Width | mm | 1100 | 1600 | 1650 | 1650 |
| Height | mm | 1700 | 2000 | 2400 | 2400 |

Operation area



Product portfolio

GENERATORS

PORTABLE
1,6–12 kVA



MOBILE
9–1250* kVA



INDUSTRIAL
10–2250* kVA



LARGE POWER
800–1450 kVA



*Multiple configurations available to produce power for any size application

DEWATERING PUMPS

ELECTRIC SUBMERSIBLE
250–16.200 l/min



SURFACE PUMPS
833–23.300 l/min



Diesel and electric options available

ENERGY STORAGE SYSTEM

ZENERGIZE



LIGHT TOWERS

DIESEL



BATTERY



ELECTRIC



AIR COMPRESSORS AND HANDHELD TOOLS

AIR COMPRESSORS
1–116 m³/min
7–345 bar



HANDHELD TOOLS
Pneumatic
Hydraulic
Petrol engine driven



ONLINE SOLUTIONS

**SHOP ONLINE
PARTS ONLINE**

Find and order the spare parts for power equipment. We handle your orders 24 hours a day.



POWER CONNECT

Scan the QR code on your machine, and go to the QR Connect Portal to find all the information about your machine.



**LIGHT THE POWER:
YOUR SIZING TOOL**

A useful calculator to help you choose the best solution for your power and light needs.



FLEETLINK

Intelligent telematics system that helps optimise fleet usage and reduce maintenance, ultimately saving time and cutting operating costs.



Atlas Copco

Atlas Copco Power Technique
www.atlascopco.com/ptba